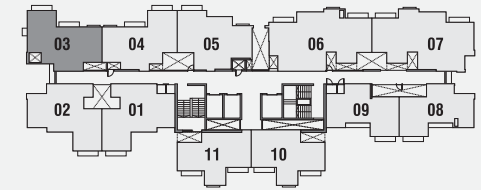
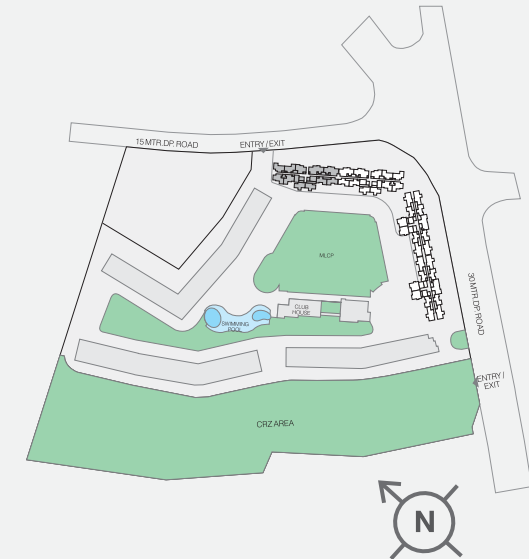
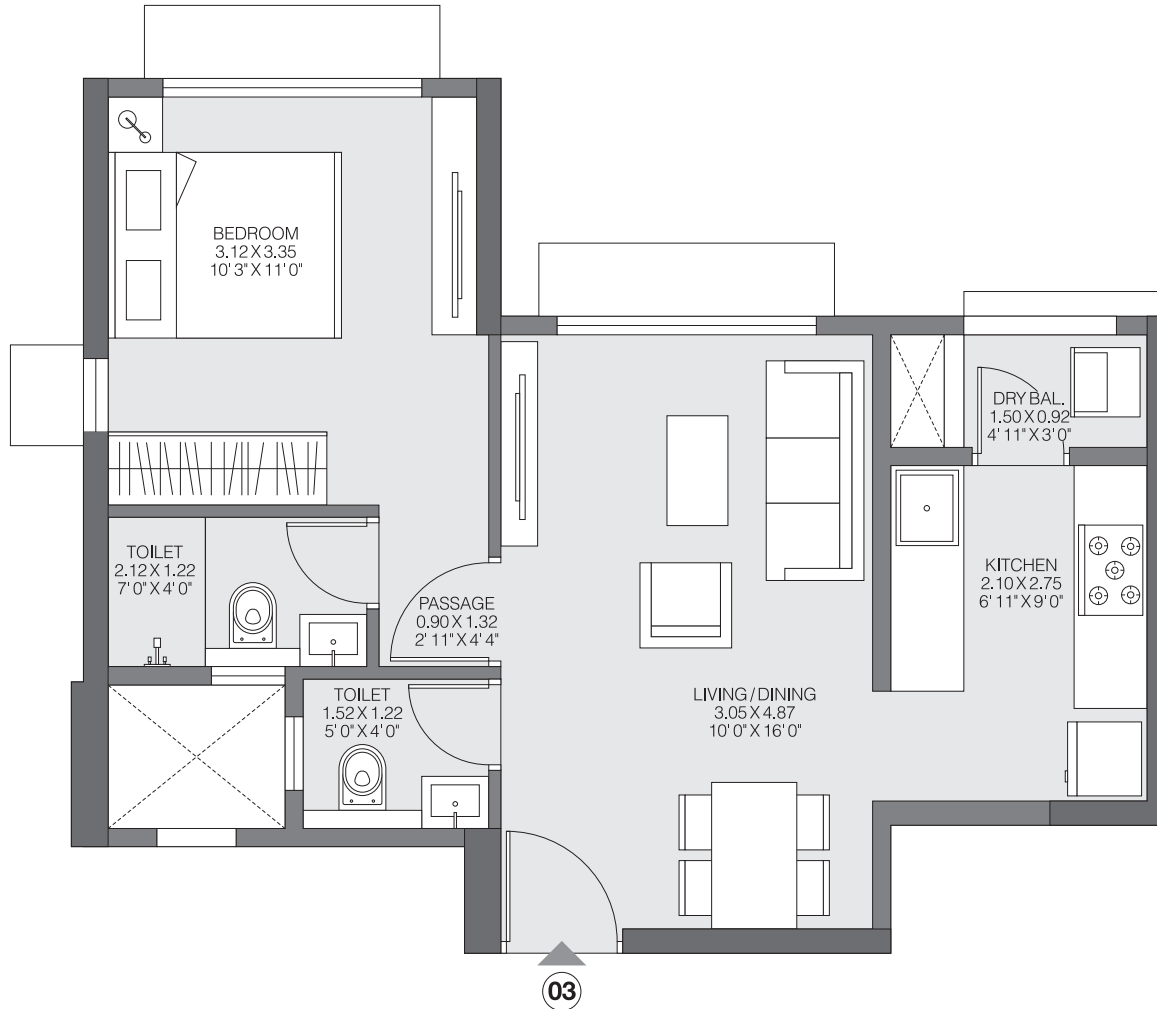


1BHK LUXE-B1

1st FLOOR



TOWER-1

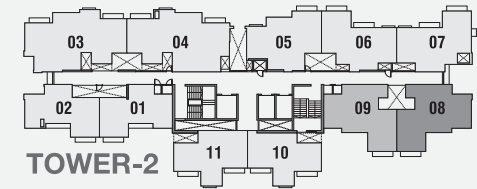
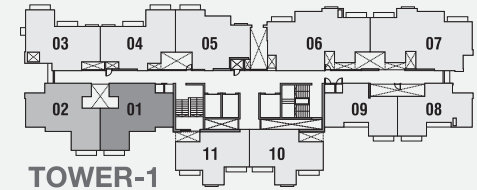
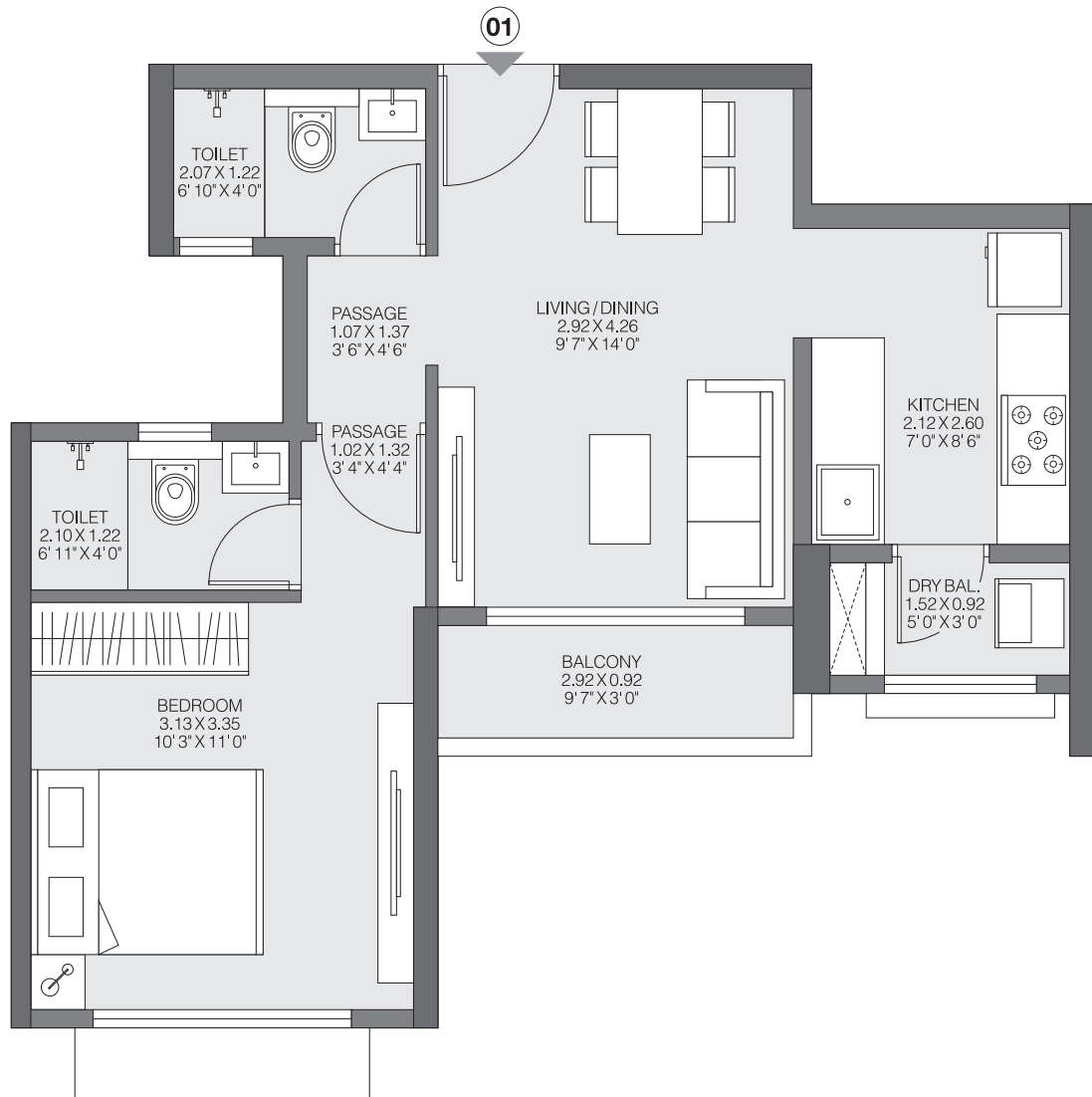


The furniture, decorative items, etc. shown in the plan are only suggested and the same are not intended or obligated to be provide as per specifications and/or service in the flat/unit and does not form part of the standard specifications. The plan represents unit series 03 of Tower 1, 1 Sq m=10.764 Sq ft.

The project is registered as "Godrej Riviera Phase 1" under MahaRERA No. P51700032552 available at <http://maharera.mahaonline.gov.in>.

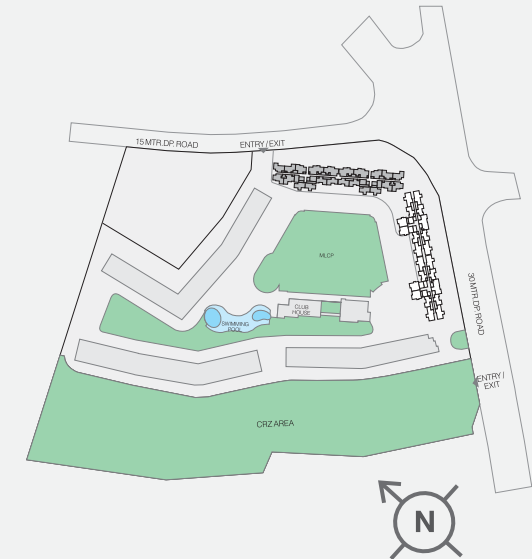
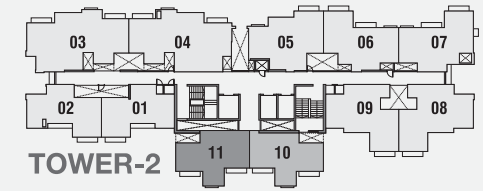
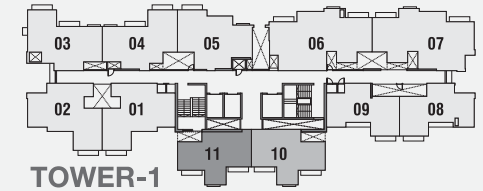
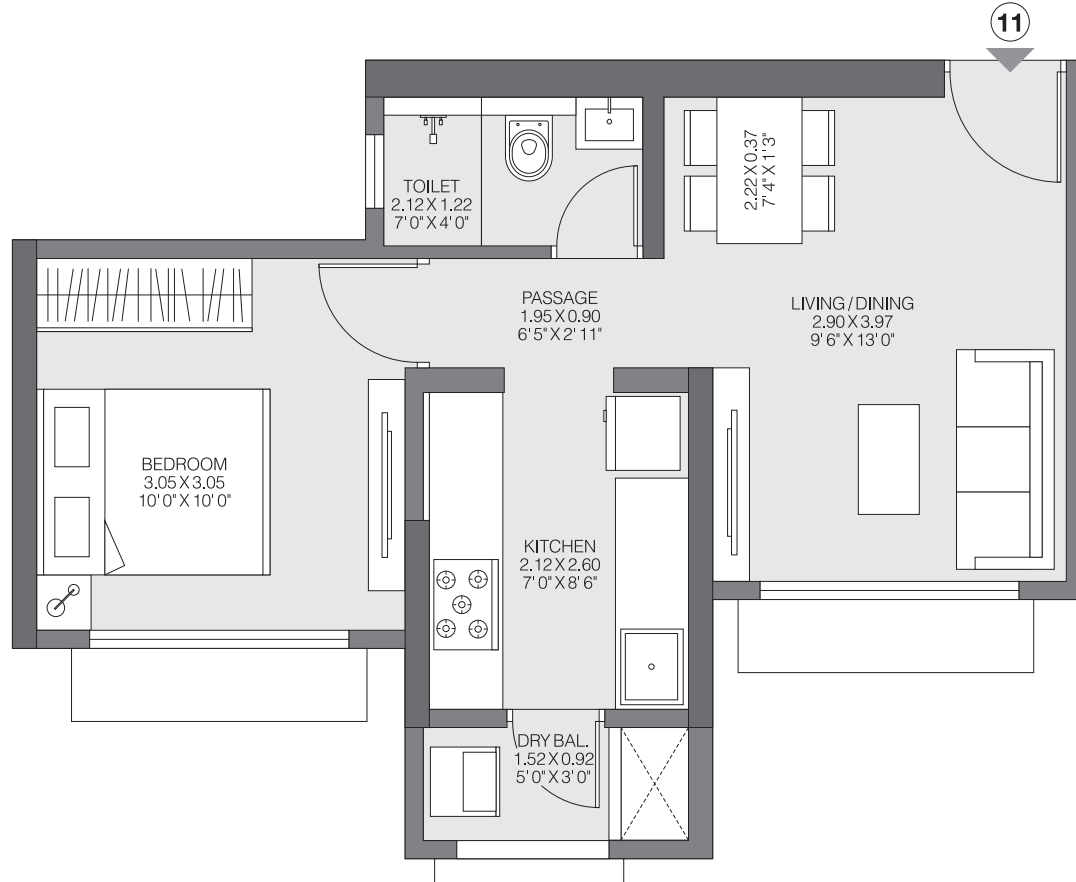
1BHK LUXE-A

1st FLOOR



1BHK PREMIUM-B

1st FLOOR



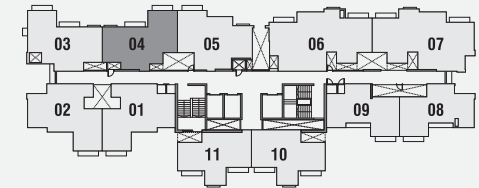
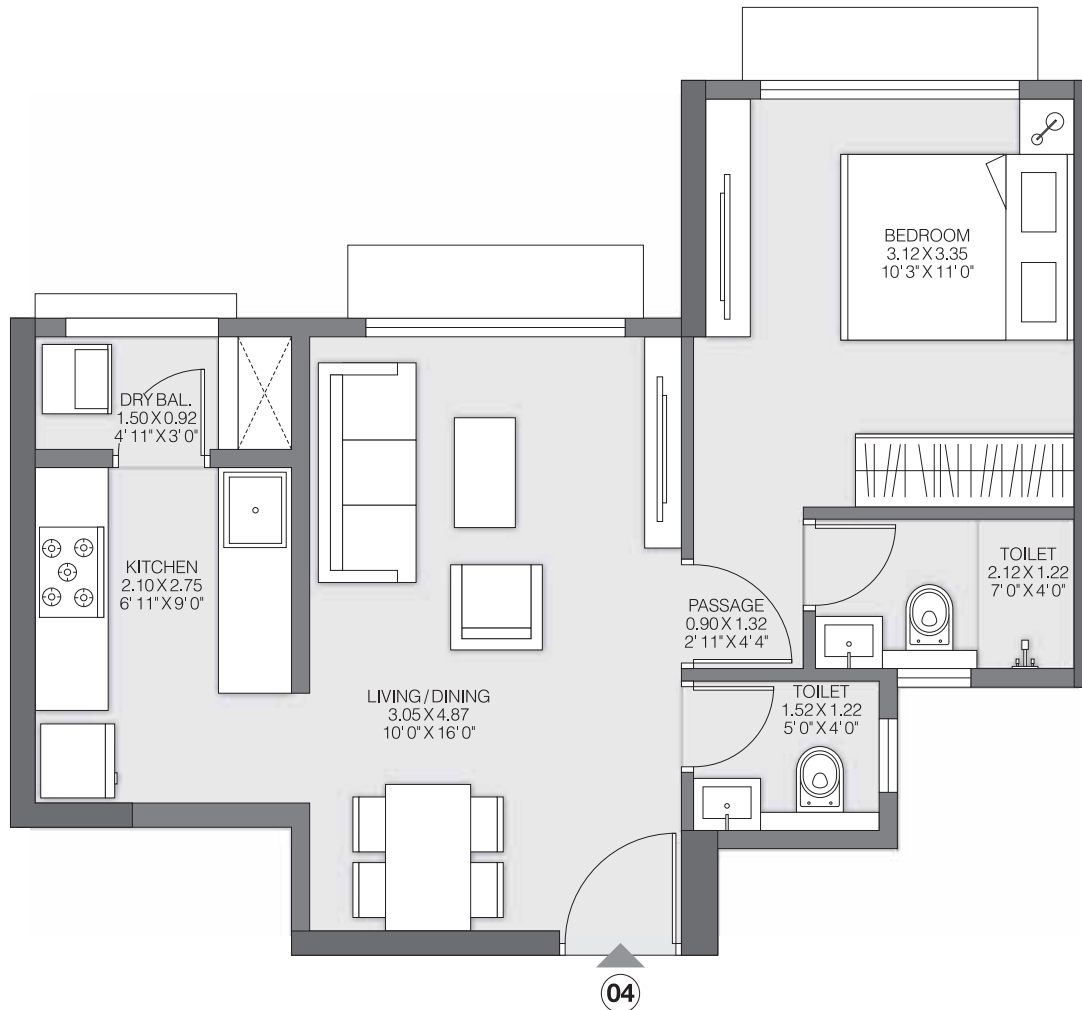
The furniture, decorative items, etc. shown in the plan are only suggested and the same are not intended or obligated to be provide as per specifications and/or service in the flat/unit and does not form part of the standard specifications. The plan represents unit series 10, 11 of Tower 1 & Tower 2, 1 Sq m=10.764 Sq ft.

The project is registered as "Godrej Riviera Phase 1" under MahaRERA No. P51700032552 available at <http://maharera.mahaonline.gov.in>.

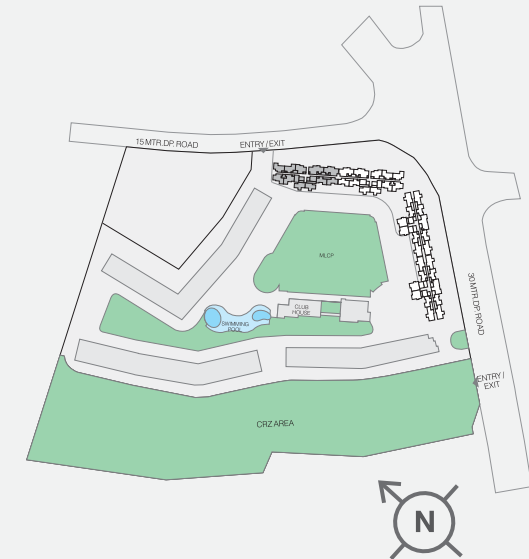
GODREJ RIVIERA KALYAN

1BHK LUXE-B

1ST FLOOR



TOWER-1

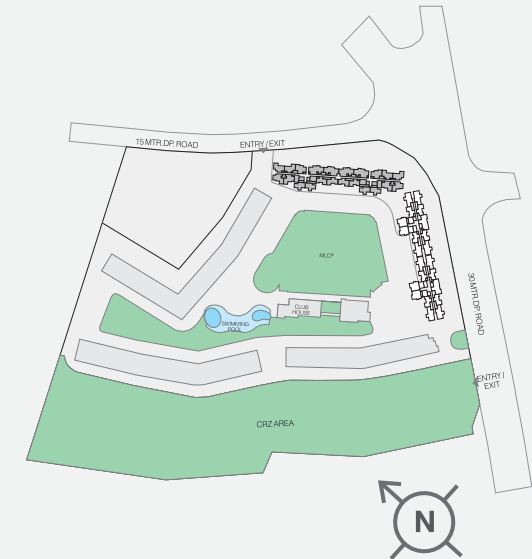
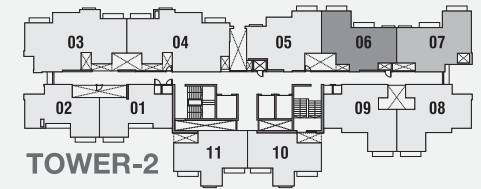
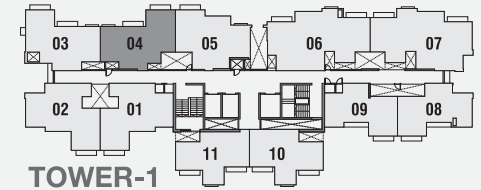
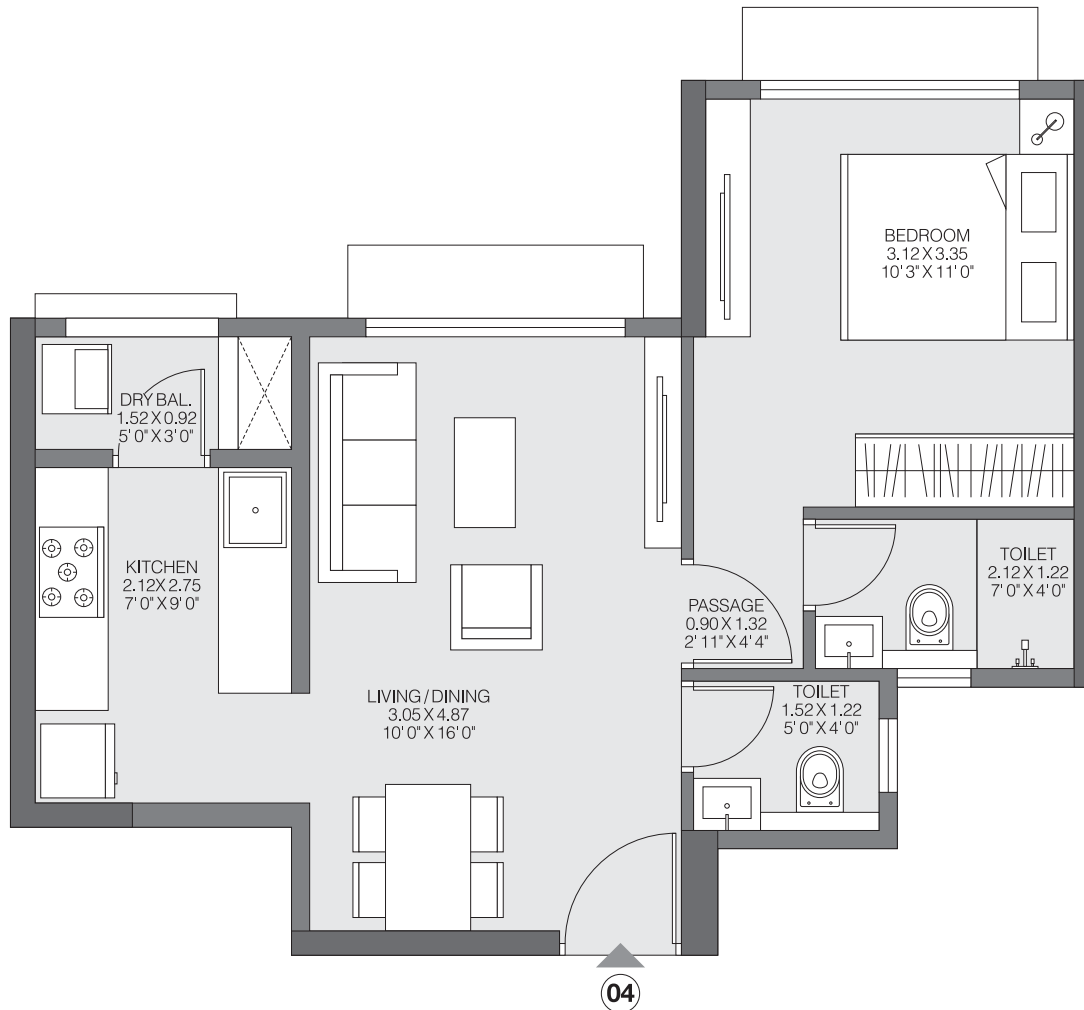


The furniture, decorative items, etc. shown in the plan are only suggested and the same are not intended or obligated to be provide as per specifications and/or service in the flat/unit and does not form part of the standard specifications. The plan represents unit series 04 of Tower 1, 1 Sq m=10.764 Sq ft.

The project is registered as "Godrej Riviera Phase 1" under MahaRERA No. P51700032552 available at <http://maharera.mahaonline.gov.in>.

1BHK LUXE-B

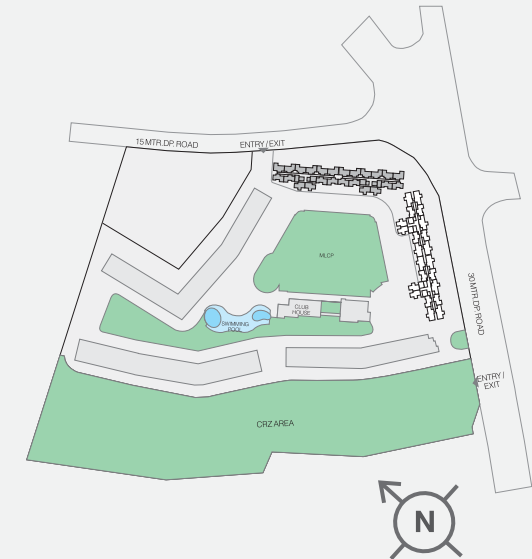
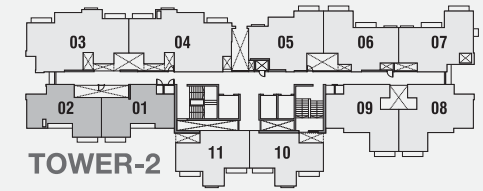
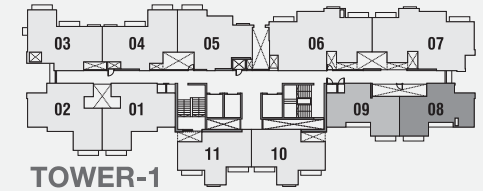
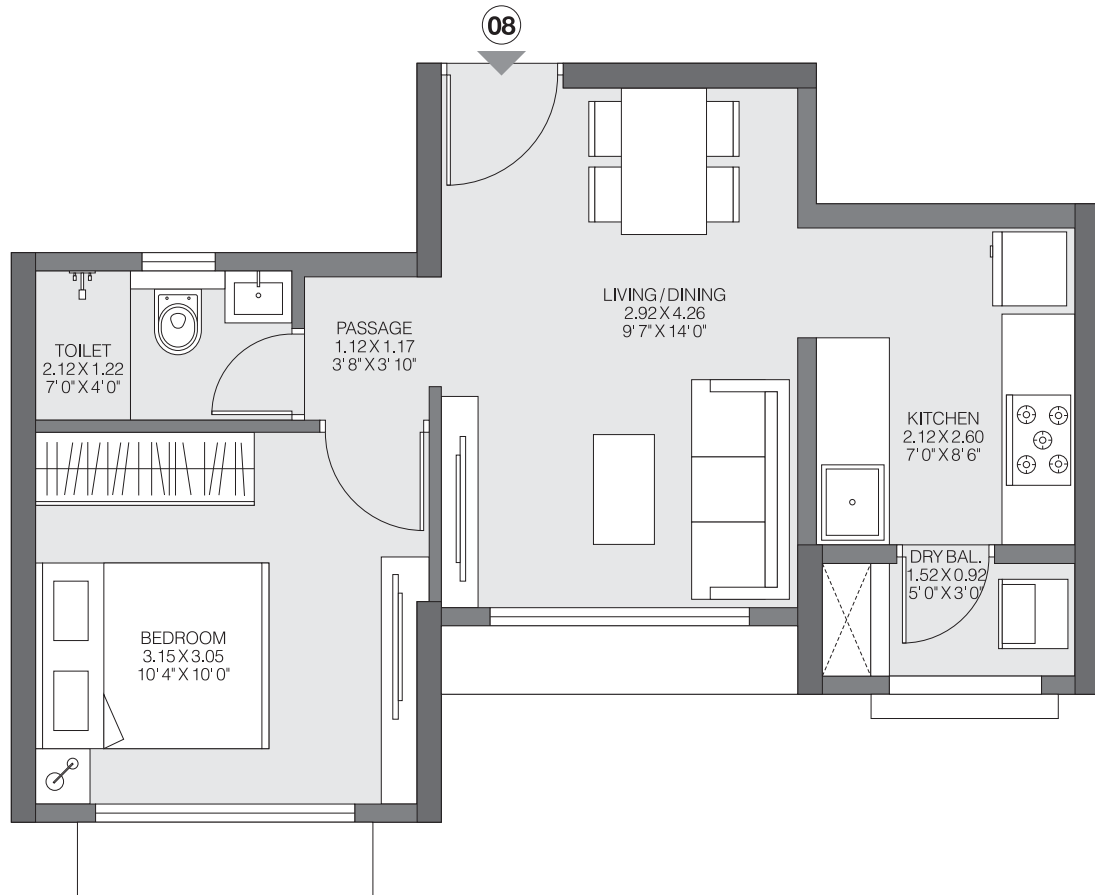
TYPICAL FLOOR



GODREJ RIVIERA KALYAN

1BHK PREMIUM-A

TYPICAL FLOOR

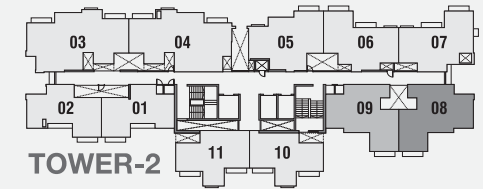
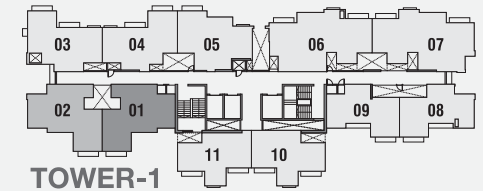
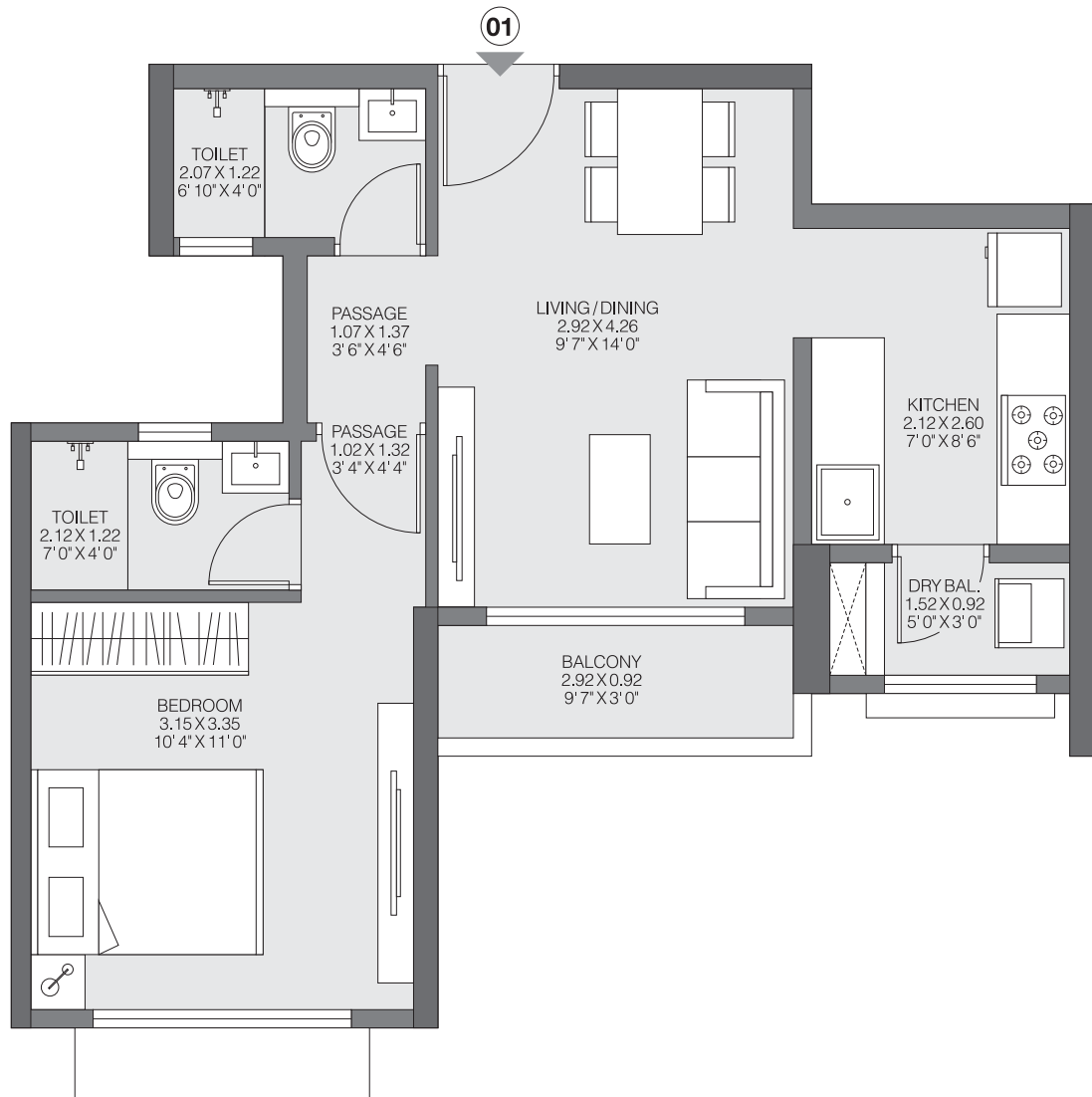


The furniture, decorative items, etc. shown in the plan are only suggested and the same are not intended or obligated to be provide as per specifications and/or service in the flat/unit and does not form part of the standard specifications. The plan represents unit series 08, 09 of Tower 1 & series 01, 02 of Tower 2, 1 Sq m=10.764 Sq ft.

The project is registered as "Godrej Riviera Phase 1" under MahaRERA No. P51700032552 available at <http://maharera.mahaonline.gov.in>.

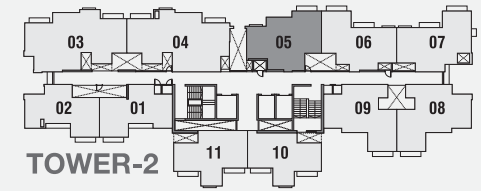
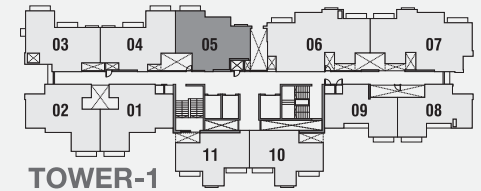
1BHK LUXE-A

TYPICAL FLOOR



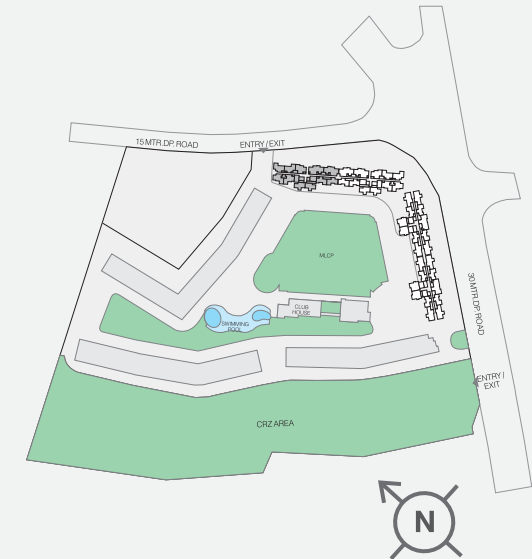
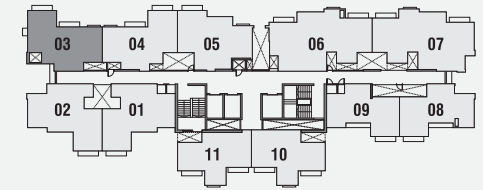
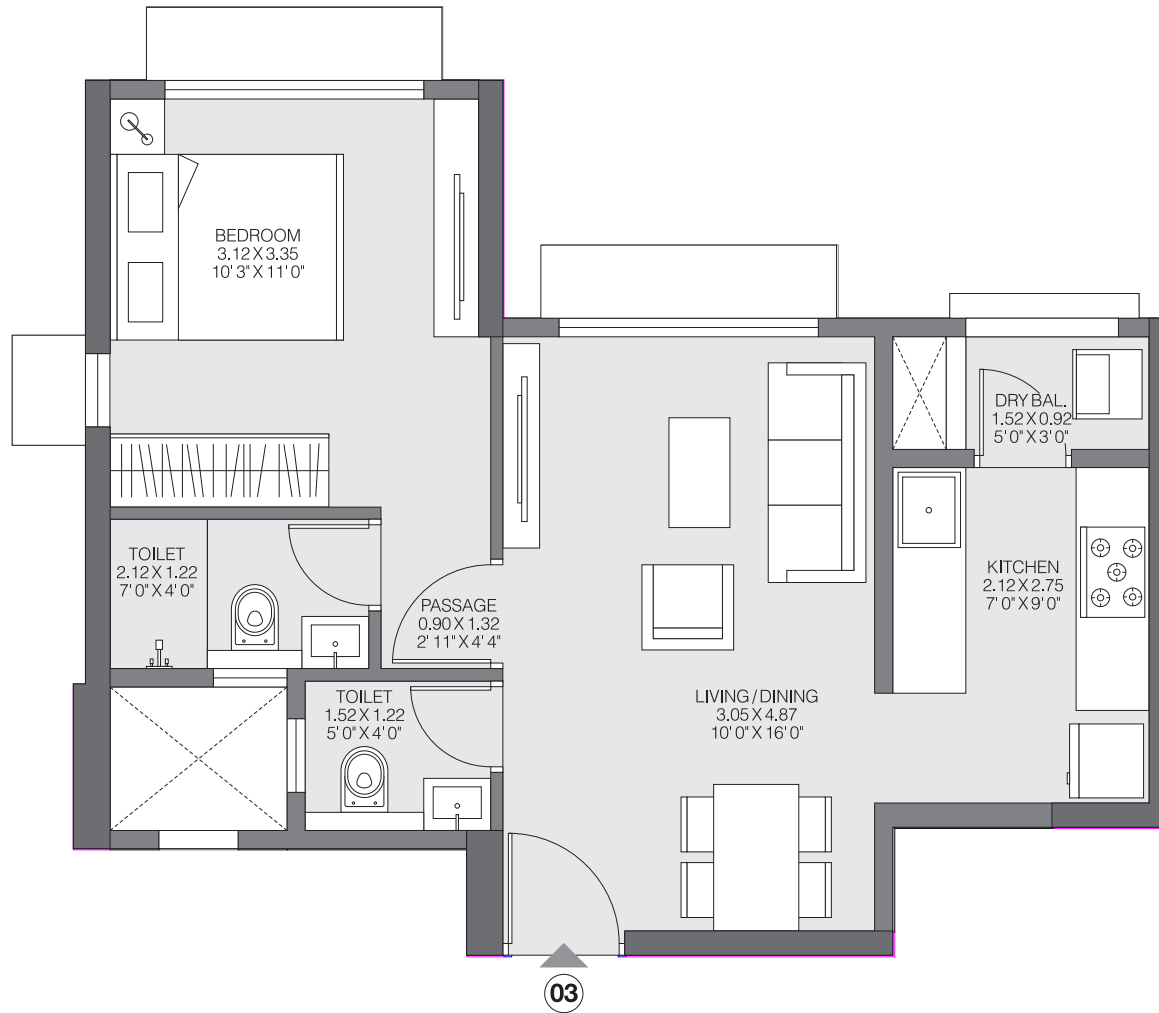
The furniture, decorative items, etc. shown in the plan are only suggested and the same are not intended or obligated to be provide as per specifications and/or service in the flat/unit and does not form part of the standard specifications. The plan represents unit series 01, 02 of Tower 1 & series 08, 09 of Tower 2, 1 Sq m=10.764 Sq ft.

The project is registered as "Godrej Riviera Phase 1" under MahaRERA No. P51700032552 available at <http://maharera.mahaonline.gov.in>.



The project is registered as “Godrej Riviera Phase 1” under MahaRERA No. P51700032552 available at <http://maharera.mahaonline.gov.in>.

1BHK LUXE-B1
TYPICAL FLOOR

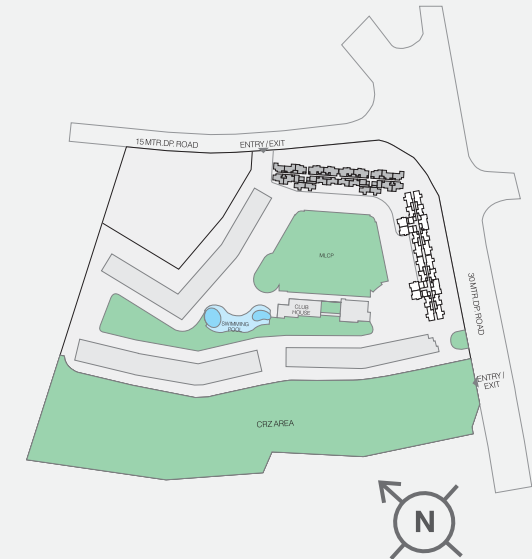
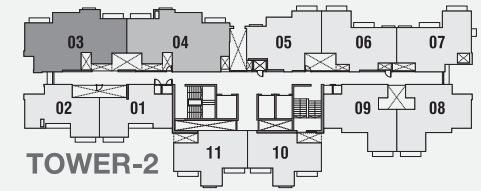
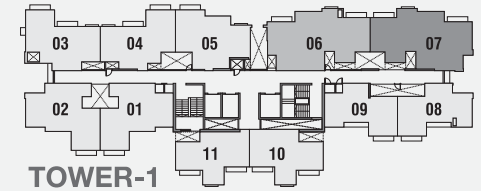
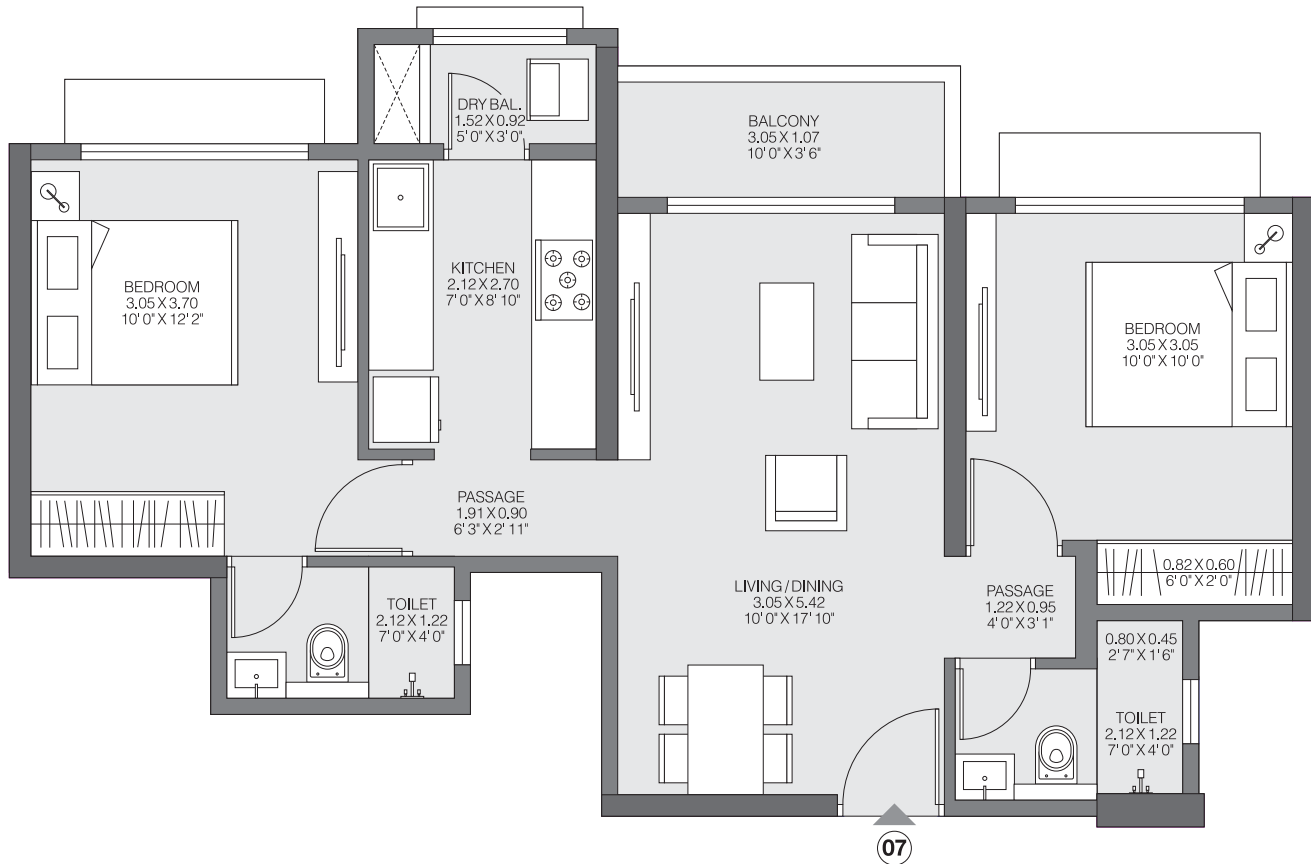


The furniture, decorative items, etc. shown in the plan are only suggested and the same are not intended or obligated to be provide as per specifications and/or service in the flat/unit and does not form part of the standard specifications. The plan represents unit series 03 of Tower 1, 1 Sq m=10.764 Sq ft.

The project is registered as "Godrej Riviera Phase 1" under MahaRERA No. P51700032552 available at <http://maharera.mahaonline.gov.in>.

2BHK LUXE-A

TYPICAL FLOOR

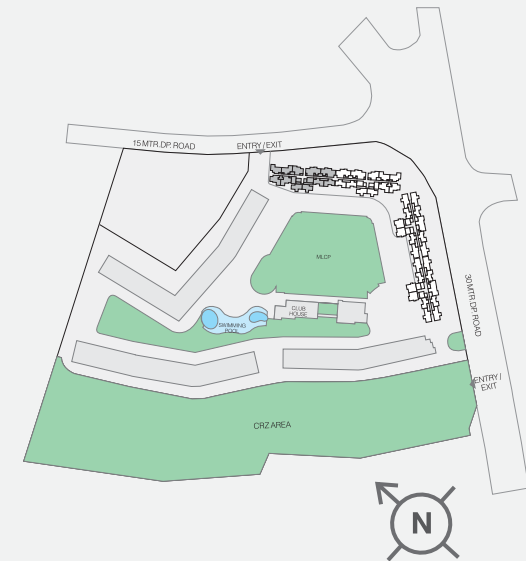
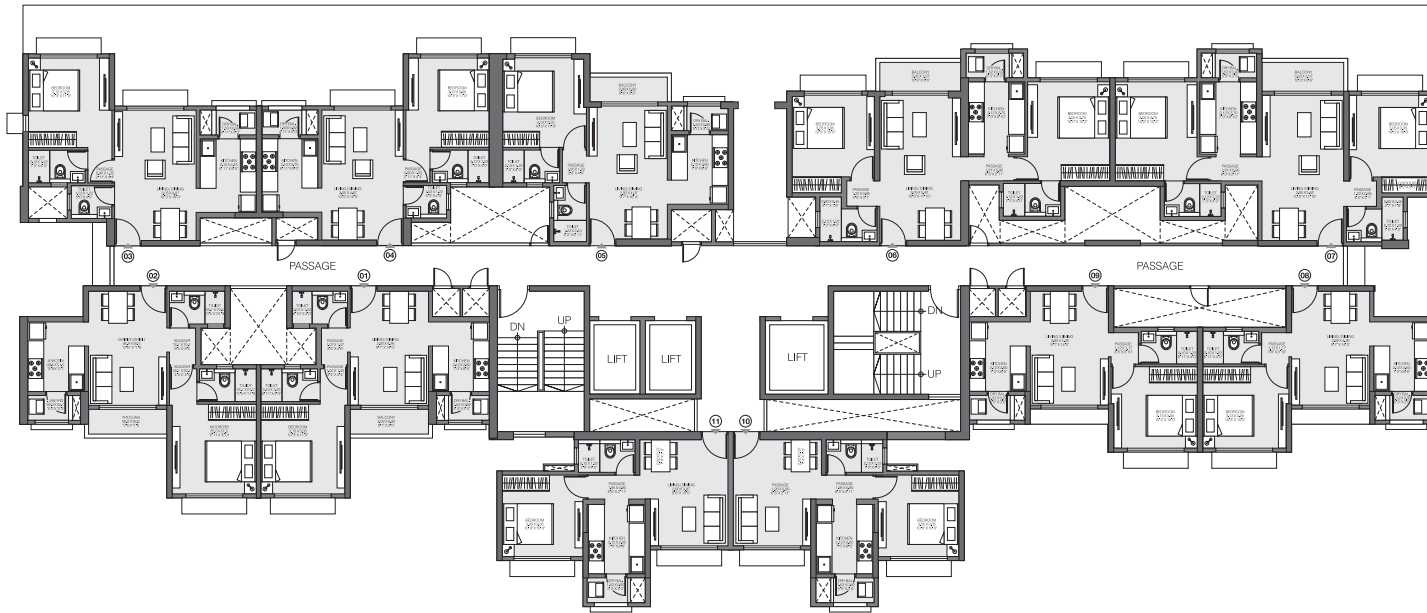


The furniture, decorative items, etc. shown in the plan are only suggested and the same are not intended or obligated to be provide as per specifications and/or service in the flat/unit and does not form part of the standard specifications. The plan represents unit series 06, 07 of Tower 1 & series 03, 04 of Tower 2, 1 Sq m=10.764 Sq ft.

The project is registered as "Godrej Riviera Phase 1" under MahaRERA No. P51700032552 available at <http://maharera.mahaonline.gov.in>.

TOWER-1

1st FLOOR



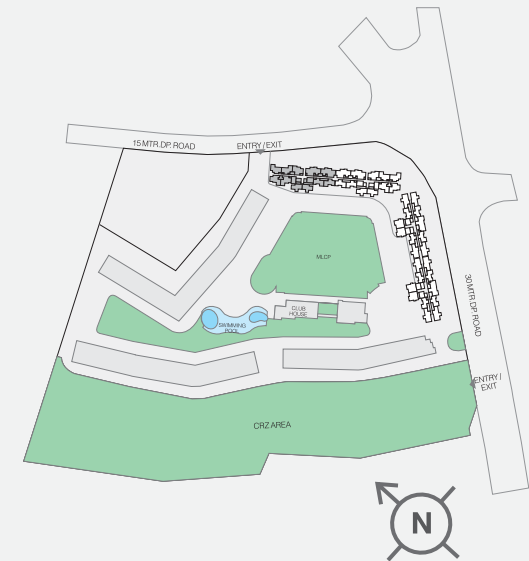
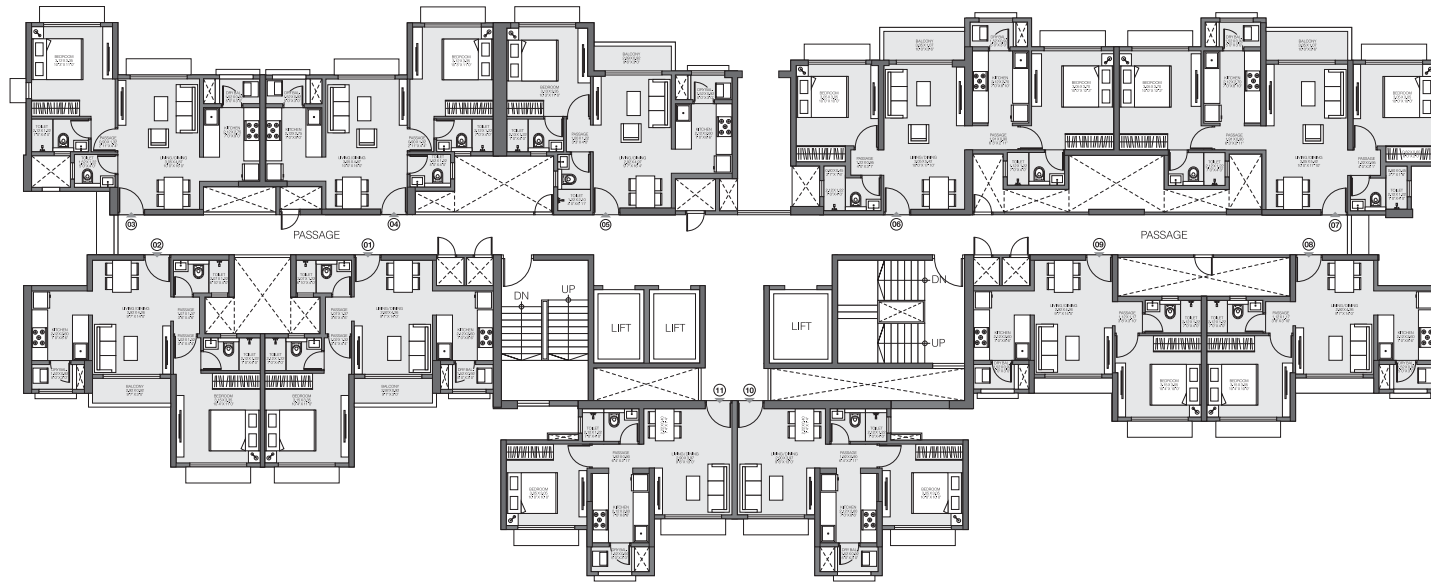
The furniture, decorative items, etc. shown in the plan are only suggested and the same are not intended or obligated to be provide as per specifications and/or service in the flat/unit and does not form part of the standard specifications. 1 Sq m=10.764 Sq ft.

The project is registered as "Godrej Riviera Phase 1" under MahaRERA No. P51700032552 available at <http://maharera.mahaonline.gov.in>.

TOWER-1

TYPICAL FLOOR

2nd to 6th, 8th to 11th,
13th to 16th, 18th to 21st



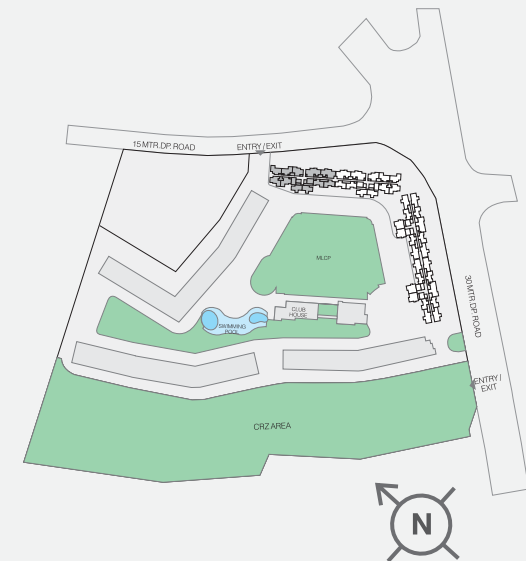
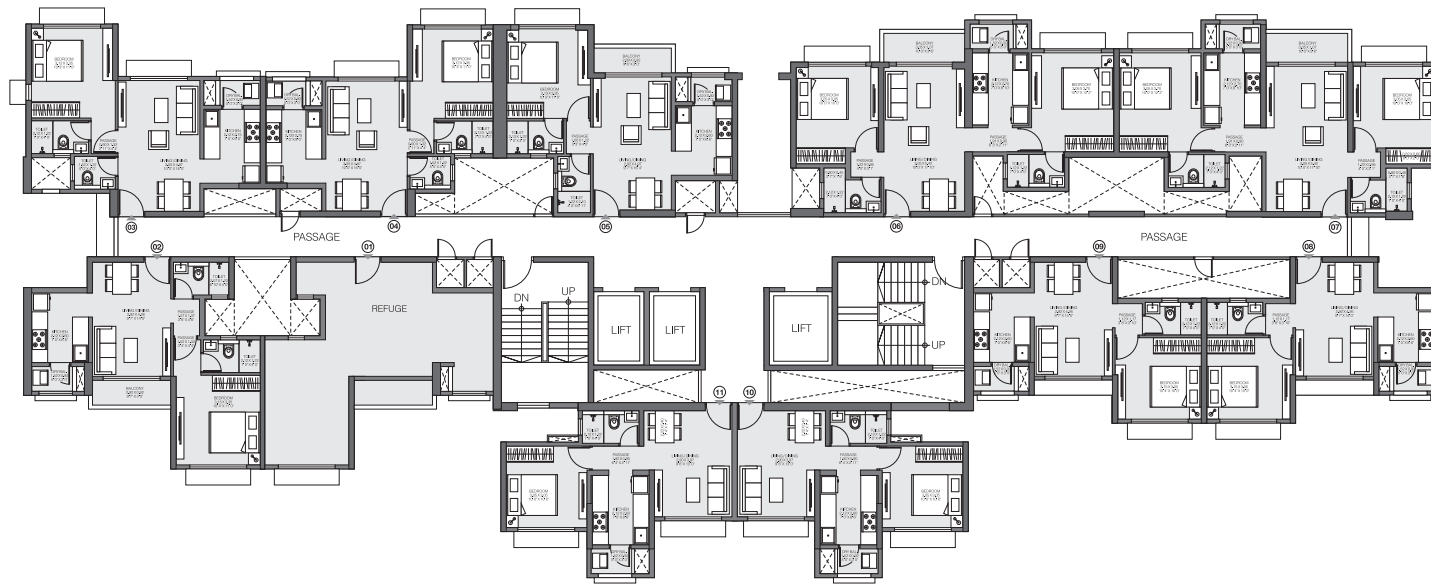
The furniture, decorative items, etc. shown in the plan are only suggested and the same are not intended or obligated to be provide as per specifications and/or service in the flat/unit and does not form part of the standard specifications. 1 Sq m=10.764 Sq ft.

The project is registered as "Godrej Riviera Phase 1" under MahaRERA No. P51700032552 available at <http://maharera.mahaonline.gov.in>.

TOWER-1

REFUGE FLOOR

7th, 12th, 17th & 22nd

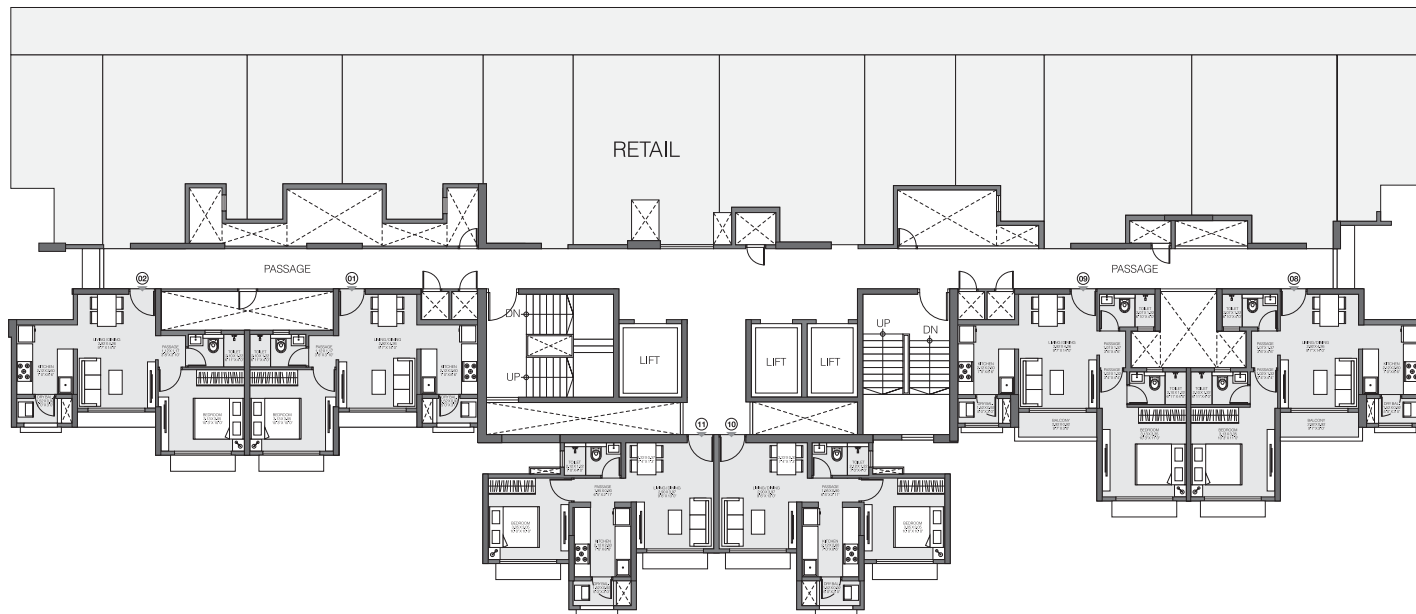


The furniture, decorative items, etc. shown in the plan are only suggested and the same are not intended or obligated to be provide as per specifications and/or service in the flat/unit and does not form part of the standard specifications. 1 Sq m=10.764 Sq ft.

The project is registered as "Godrej Riviera Phase 1" under MahaRERA No. P51700032552 available at <http://maharera.mahaonline.gov.in>.

TOWER-2

1st FLOOR

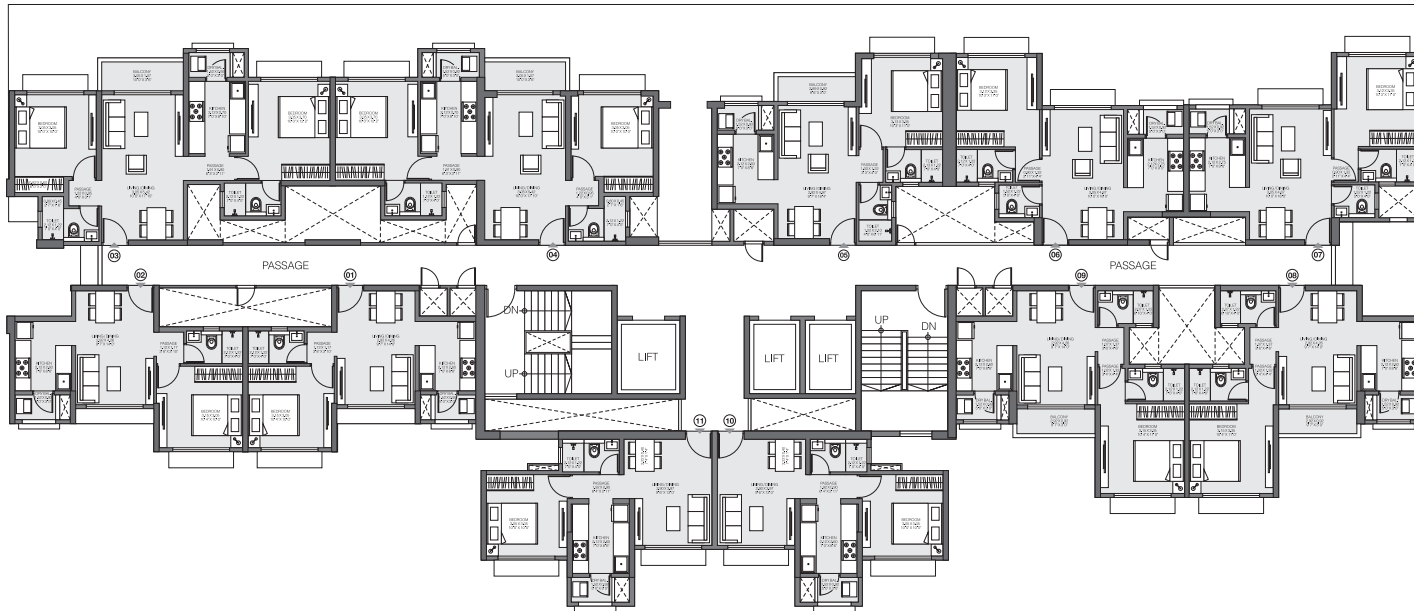


The furniture, decorative items, etc. shown in the plan are only suggested and the same are not intended or obligated to be provide as per specifications and/or service in the flat/unit and does not form part of the standard specifications. 1 Sq m=10.764 Sq ft.

The project is registered as "Godrej Riviera Phase 1" under MahaRERA No. P51700032552 available at <http://maharera.mahaonline.gov.in>.

TOWER-2

2nd FLOOR



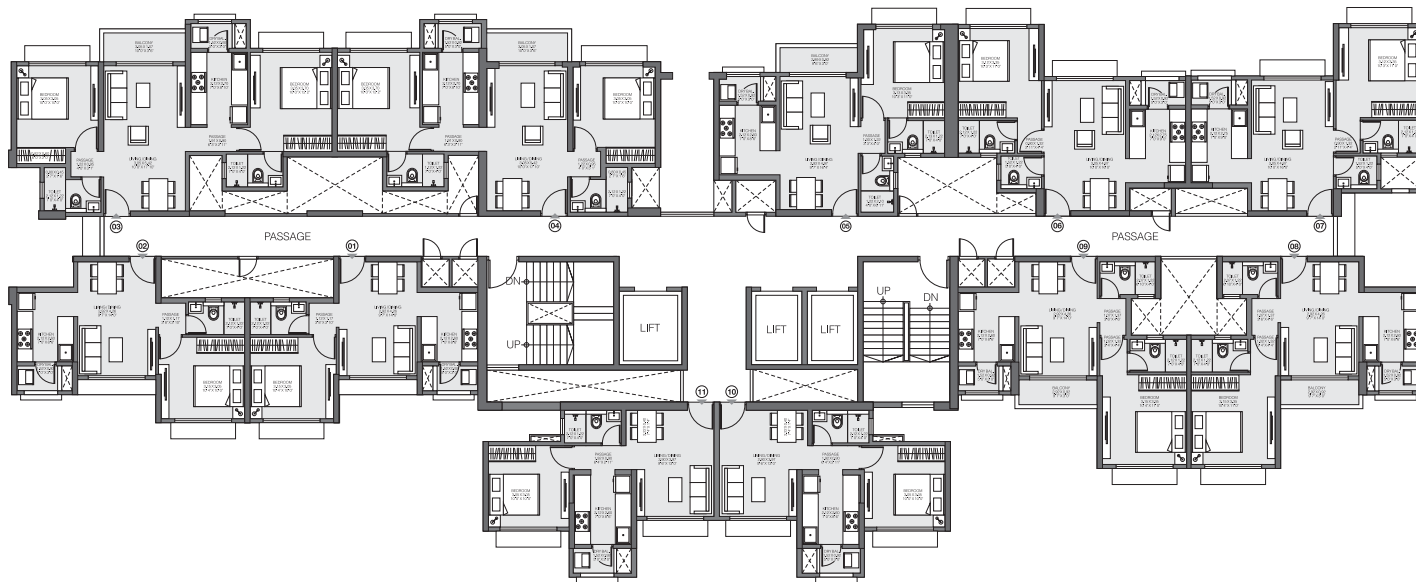
The furniture, decorative items, etc. shown in the plan are only suggested and the same are not intended or obligated to be provide as per specifications and/or service in the flat/unit and does not form part of the standard specifications. 1 Sq m=10.764 Sq ft.

The project is registered as "Godrej Riviera Phase 1" under MahaRERA No. P51700032552 available at <http://maharera.mahaonline.gov.in>.

TOWER-2

TYPICAL FLOOR

3rd to 6th, 8th to 11th,
13th to 16th, 18th to 21st



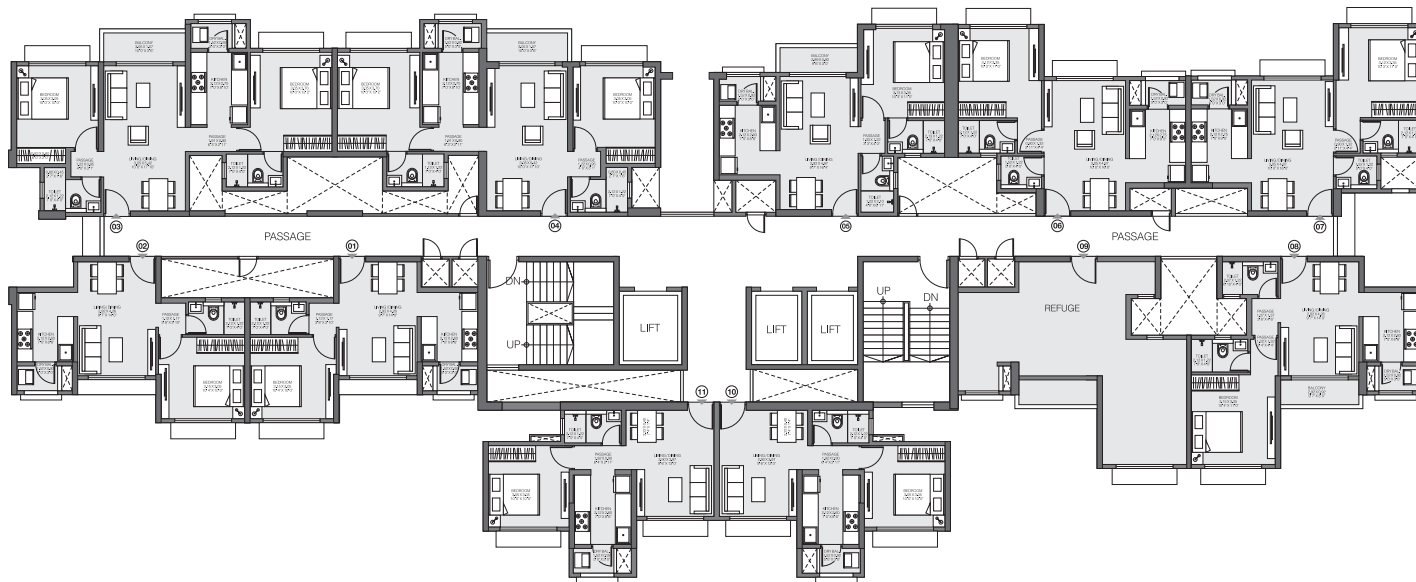
The furniture, decorative items, etc. shown in the plan are only suggested and the same are not intended or obligated to be provide as per specifications and/or service in the flat/unit and does not form part of the standard specifications. 1 Sq m=10.764 Sq ft.

The project is registered as "Godrej Riviera Phase 1" under MahaRERA No. P51700032552 available at <http://maharera.mahaonline.gov.in>.

TOWER-2

REFUGE FLOOR

7th, 12th, 17th & 22nd



The furniture, decorative items, etc. shown in the plan are only suggested and the same are not intended or obligated to be provide as per specifications and/or service in the flat/unit and does not form part of the standard specifications. 1 Sq m=10.764 Sq ft.

The project is registered as "Godrej Riviera Phase 1" under MahaRERA No. P51700032552 available at <http://maharera.mahaonline.gov.in>.