

# ELEVATE GODREJ SE7EN®

LEVEL UP  
—YOUR LIFE—

JOINT DEVELOPEMENT PARTNER

**SELV EL**

A NATIONAL OUTDOOR MEDIA COMPANY

*godrej* | **PROPERTIES**



# *The Godrej Legacy*

The Godrej story began in 1897, with the manufacture of locks. Since then, we have set several benchmarks. From a state-of-the-art manufacturing facility in a suburb of Mumbai, we've reached homes, offices, industries and the hearts of millions of people in India and around the world. With a proud tradition of many firsts, we find ourselves at work every day, building on the foundations of trust that were laid 127 years ago.



# Godrej Properties has been felicitated with over 250 awards and recognitions.



**Best Design Project**

Realty+, 2022



**Best Interior Design**

Realty+, 2022



**Lopez Design for  
Energizing - Central Park**

India's Best  
Design Awards, 2021



**National Brand Leaders**

Track2Realty BrandXReport,  
2019-20



**Porter Prize: For Leveraging  
Unique Activities**

Porter Prize, 2019



**Ranked #1 Globally for  
a third consecutive year**

GRESB (Global Real Estate  
Sustainability Benchmark)



**India's Top Builders  
Award**

Construction World Architect  
and Builder (CWAB) Awards,  
2018



**Real Estate Company  
of the Year**

Construction Week  
Awards, 2019



**Plotted Development  
of the Year**

Realty+ Conclave Award,  
2022



**Best Interior Design**

Realty+ Conclave Award,  
2021



**Architectural Design  
of the Year**

Realty+ Conclave Award,  
2021



**Wealth Creator Among  
The Next 500 Companies**

Fortune India



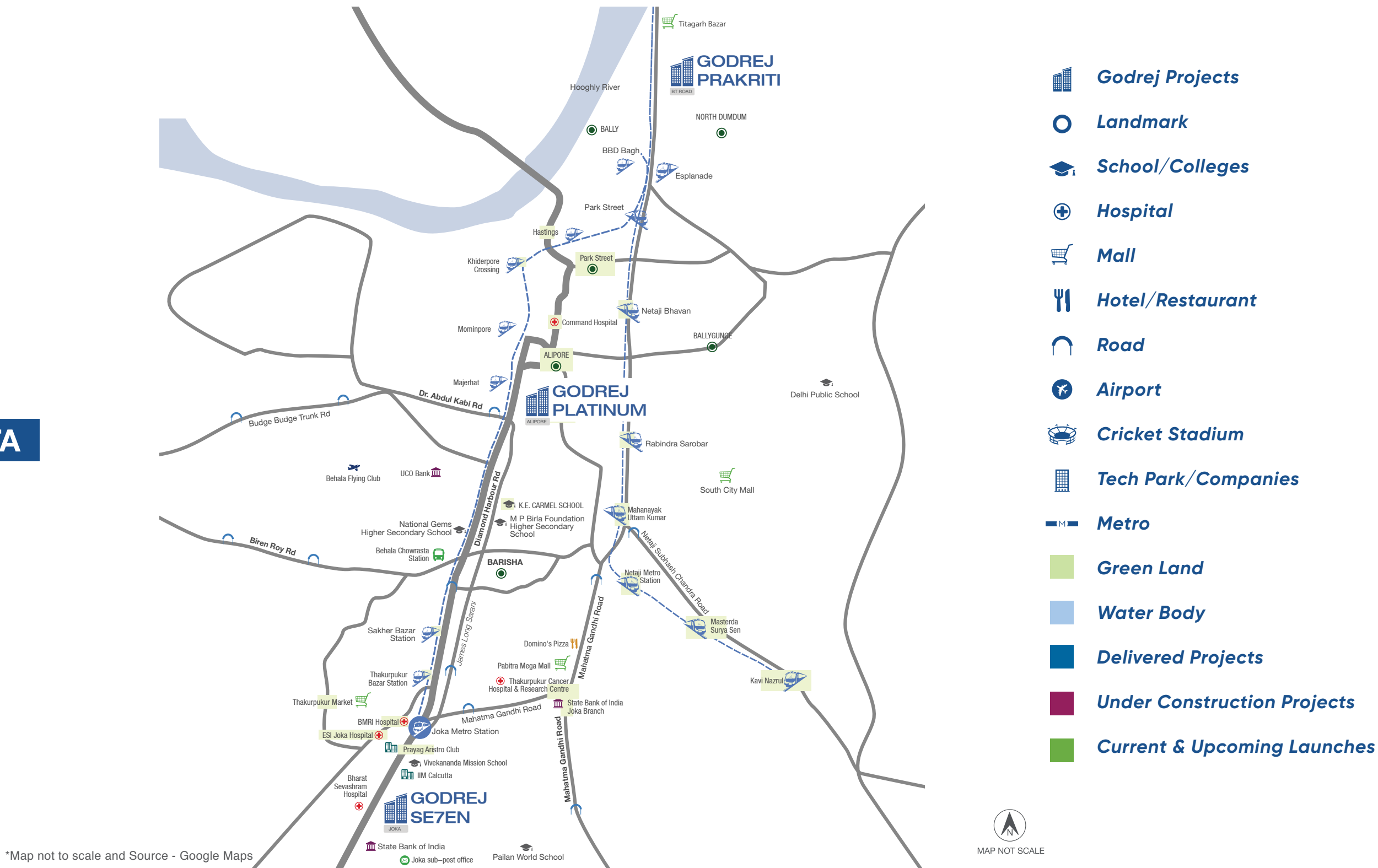
**Integrated Township Project  
of the Year**



Realty+ Excellence Awards,  
2023

# How we have elevated Kolkata's skyline since 2009

**KOLKATA**



SOURCE: GOOGLE MAP

This is not an offer, invitation to offer or commitment of any nature. Recipients are advised to apprise themselves of the necessary and relevant information of the project/offer prior to making any purchase decisions. The sale is subject to terms of application form and agreement for sale. All specifications of the unit shall be as per the final agreement between the parties. Recipients are advised to apprise themselves of the necessary and relevant information of the project prior to making any purchase decisions. The developer shall not assure any responsibility of information provided by third parties and reliance shall be placed on information provided on the company's official website. The official website of godrej properties ltd. Is [www.Godrejproperties.Com](http://www.Godrejproperties.Com). Please do not rely on the information provided on any other website.



***A location that elevates  
your connections and lifestyle.***



### **HEALTHCARE**

Bharat Sevasram Sangha Hospital (0.1 kms | Approx. 1 minute)  
ESI Hospital (2.2 kms | Approx. 6 minutes)  
BMRI Nursing Home (2.3 kms | Approx. 7 minutes)  
Kasturi Medical Centre (2.8 kms | Approx. 7 minutes)  
BMRI Hospital (5.1 kms | Approx. 12 minutes)  
Disha Eye Hospital (5.8 kms | Approx. 16 minutes)  
CMRI Hospital (10.8 kms | Approx. 29 minutes)  
Kothari Medical Center (11.8 kms | Approx. 30 minutes)  
Woodlands Hospital (13.6 Km) (Approx 46 minutes)  
Narayan Memorial Hospital (9.9 Km) (Approx 30 minutes)



### **SHOPPING AND ENTERTAINMENT**

Trendz (3.3 kms | Approx. 7 minutes)  
Reliance Digital (3.3 kms | Approx. 7 minutes)  
South City Mall (13 kms | Approx. 33 minutes)  
Quest Mall (17 kms | Approx. 41 minutes)  
CBD and IT hubs  
Esplanade (18 kms | Approx. 41 minutes)  
Burrabazar (19 kms | Approx. 45 minutes)  
Salt Lake Sector 5 (27 kms | Approx. 56 Minutes)



### **RESTAURANTS**

Subway (1.6 kms | Approx. 5 minutes)  
Domino's Pizza (2.3 kms | Approx. 6 minutes)  
Behrouz Biryani (3.3 kms | Approx. 9 minutes)  
Mio Amore (3.4 kms | Approx. 9 minutes)  
Azad Hind Dhaba (4.9 kms | Approx. 14 minutes)  
Haka (5.6 kms | Approx. 15 minutes)  
KFC (5.7 kms | Approx. 15 minutes)  
6, Ballygunje Place (5.7 kms | Approx. 15 minutes)  
Wow Momo (7 kms | Approx. 18 minutes)



### **RAILWAYS AND METROz**

Joka Metro (1.6 kms | Approx. 5 minutes)  
Sealdah Station (19 kms | Approx. 45 minutes)  
Howrah Station (19.9 kms | Approx. 43 minutes)



### **SCHOOLS**

Vivekananda Mission School (850 ms | Approx. 2 minutes)  
Kendriya Vidyalaya (2 kms | Approx. 7 minutes)  
Pailan World School (3.5 kms | Approx. 11 minutes)  
DPS Joka School (6.2 kms | Approx. 14 minutes)  
K.E Carmel School (6.6 kms | Approx. 15 minutes)  
M.P. Birla Foundation School (7 kms | Approx. 19 minutes)  
National Gems Higher Secondary School  
(7.1 kms | Approx. 21 minutes)



# LEVEL UP — YOUR LIFE —

Embrace a life full of comfort, convenience, and the luxury of having not just everything you need, but also everything you want. Indulge in a host of amenities that are designed to elevate your life, every day.





# *Exclusive amenities that elevate your life.*



An ecosystem  
of 7 gardens



~1.75 acres of vehicle  
free central greens



~900+ Trees



Central lake



Healthy & sustainable  
living

# Master layout plan

## ELEVATE

GODREJ SE7EN, JOKA, KOLKATA

### MASTER LAYOUT PLAN





# Master layout plan

## ELEVATE

GODREJ SE7EN, JOKA, KOLKATA

### MASTER LAYOUT PLAN

#### PHASE -3

##### LEGEND

1. MECHANICAL STACK PARKING
2. ENTRY GATE
3. SCULPTURE WALK
4. RIBBON PARK
5. ADDA ZONE
6. OPEN SEATING
7. MOUND GARDEN
8. MULTIPURPOSE COURT @ 4TH FLOOR
9. GREEN LAWN @4TH FLOOR
10. SWIMMING POOL @4TH FLOOR
11. KID'S POOL @4TH FLOOR
12. YOGA DECK
13. STORY TELLING DECK
14. PERGOLA WALKWAY
15. OPEN AIR THEATRE
16. GALAXY THEME AREA
17. CLOUD MEDITATION DECK
18. PARTY LAWN
19. SUNSET LOUNGE
20. ROOFTOP GARDEN CHESS
21. PARTY DECK
22. SKY THEME AREA
23. BARBEQUE AREA
24. WORK FROM NATURE
25. STAR GAZING DECK
26. SERVICES





*Delightful amenities  
to elevate your lifestyle.*



# *Elevate your life with a host of delightful amenities in the clubhouse.*

The clubhouse is designed to offer you experiences that make your day, every day. Whether it's you or your kids, explore a host of amenities that elevate your life.



Stock image for representation purpose only.



Multipurpose Court



Kid's Play Area



Open Verandah



Stepped Seating



Party Lawn

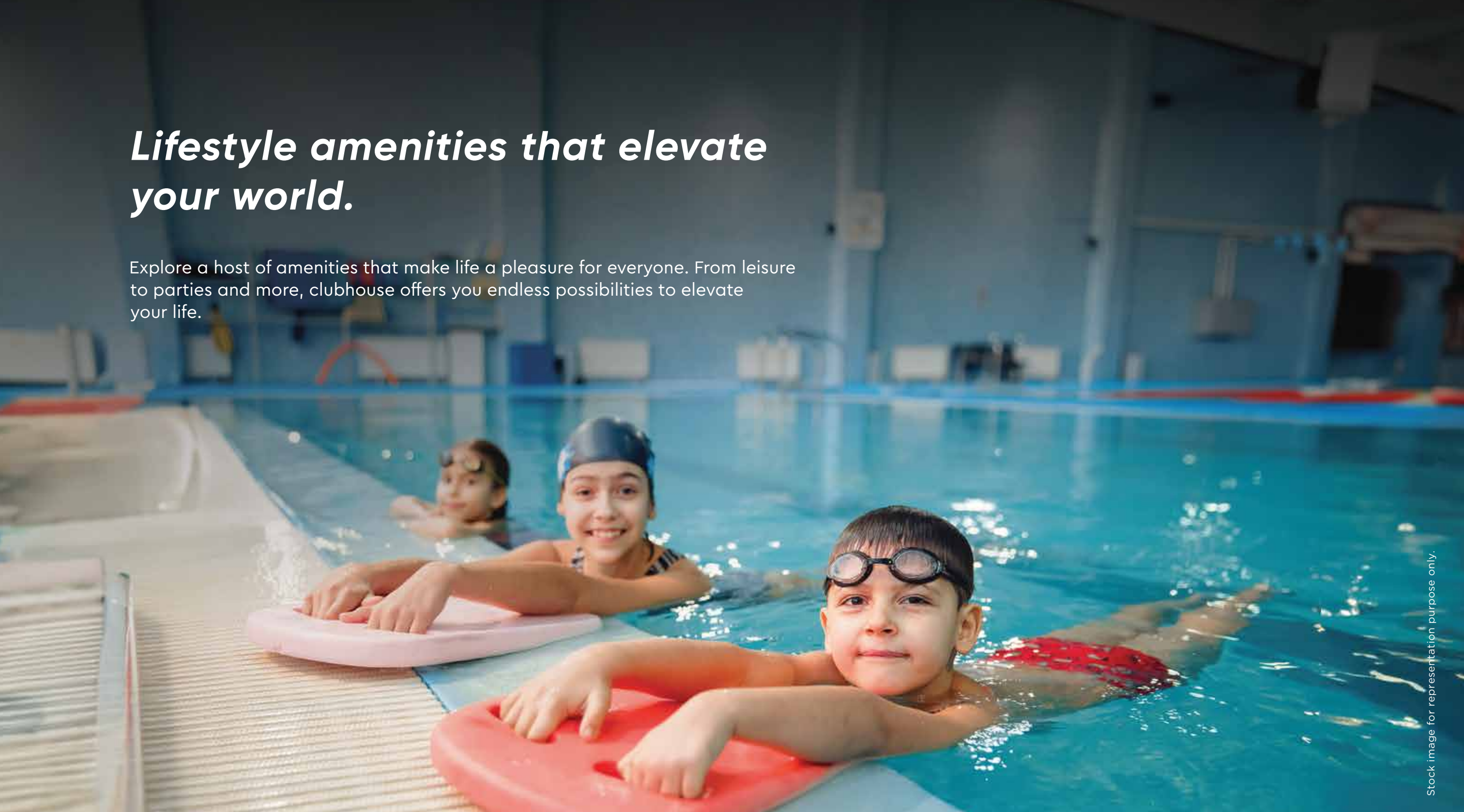


Adda Zone



# Lifestyle amenities that elevate your world.

Explore a host of amenities that make life a pleasure for everyone. From leisure to parties and more, clubhouse offers you endless possibilities to elevate your life.



Stock image for representation purpose only.



Paved Deck



Pool Deck



Kid's Pool



Lap Pool



Kid's Corner



Club Verandah

\*Usage of amenities and facilities shall be for the entire Godrej SE7EN project.

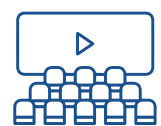


*A host of amenities  
to elevate your  
entertainment.*

# *Designing a lavish life to elevate your experience.*

The clubhouse on the fourth floor is home to a bunch of fun, relaxing and active amenities that are just perfect for you, whatever your mood is.

Artist's impression



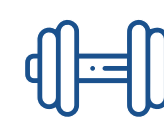
AV Room



Club Lounge



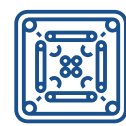
Multi-Purpose Hall



Gymnasium



TT Room



Indoor Games room



Virtual Games room

\*Usage of amenities and facilities shall be for the entire Godrej SE7EN project.



*Sky amenities that  
elevate your senses.*



# *Elevate to the level of the sky with rooftop amenities.*

Enjoy a host of lifestyle amenities on the rooftop that are designed to make your day delightful and rewarding no matter the time.

Artist's impression



Sunrise/Yoga Deck



Vault of Heaven



Andromeda Adda Zone



Sky Cinema



Story Telling Deck



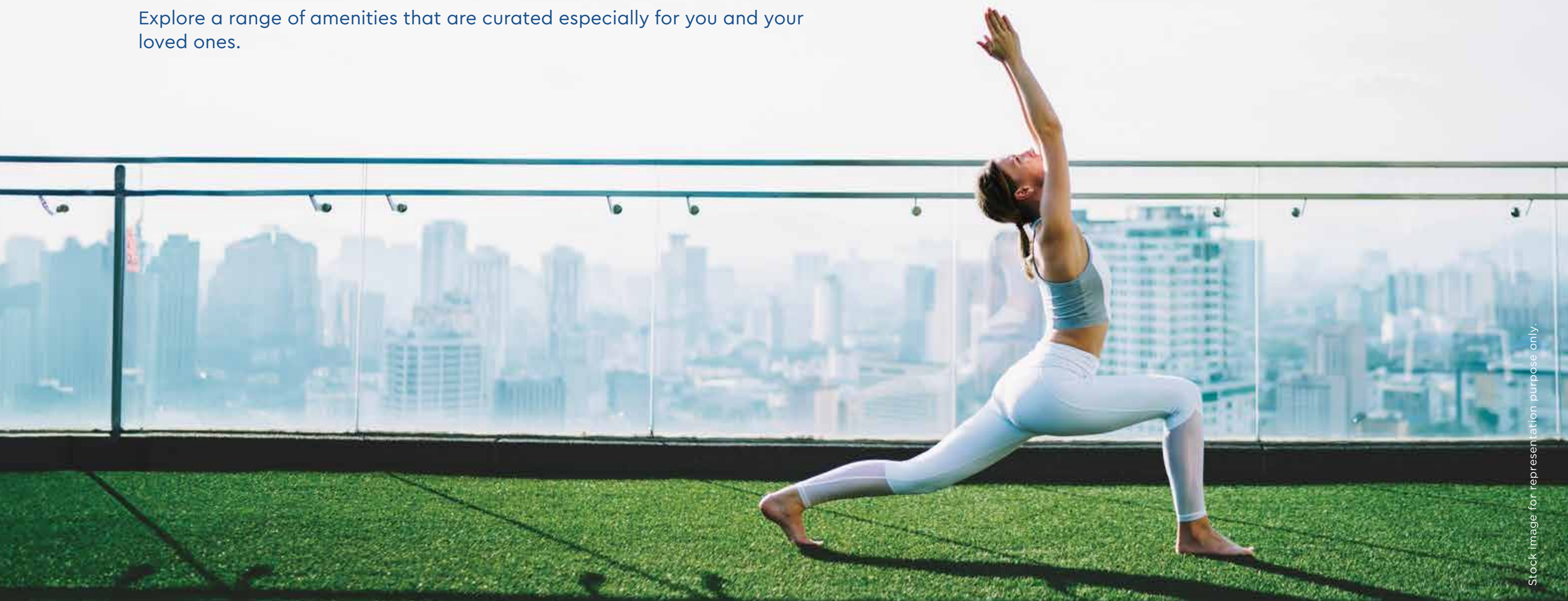
Selfie Wall

\*Usage of amenities and facilities shall be for the entire Godrej SE7EN project.



# Elevate your lifestyle with amenities many feet above the ground.

Explore a range of amenities that are curated especially for you and your loved ones.



Stock image for representation purpose only.



Sunset/Star  
Gazing Deck



Star Walk



Sky Fit Zone



Sky Recluse



Barbeque Junction



Work From Nature Zone



Rooftop Chess Garden

\*Usage of amenities and facilities shall be for the entire Godrej SE7EN project.



*Amenities that  
elevate your joy.*



# Magnificent landscape and amenities to elevate your mood every day.

A host of amenities designed to fill you with a sense of joy and beauty  
that sets the tone for your day, every day.



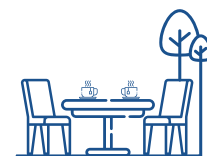
Stock image for representation purpose only.



Sculpture Walk



Ribbon Park



Adda Zone



Boundary Planting



Mound Garden

\*Usage of amenities and facilities shall be for the entire Godrej SE7EN project.



# ***Elevate your connection with nature.***

In the company of 100+ Fruit Bearing Trees, 2.5 kms of green walkways and a central lake, you will find a relaxed lifestyle that rejuvenates your senses.



**~100+ fruit-bearing trees**



**~2.5 km of green walkways**



**~900+ Trees**



**~600 meter of lush green corridor from D.H. road**



**~Central lake**



**~1.75 acres of vehicle free central greens**



# *Differential Specifications*



# *Delightful details that elevate your living experience every day.*

Thoughtfully designed interiors make your home elegant and comfortable, ensuring that you have all the comforts you need, while making every day a joyful experience.



8 Ft. high modular main door



Full height sliding door between Living/Dining and balcony



All apartments with wooden flooring in master bedroom



Utility balcony with every apartment



Wall hung WCs and washbasins



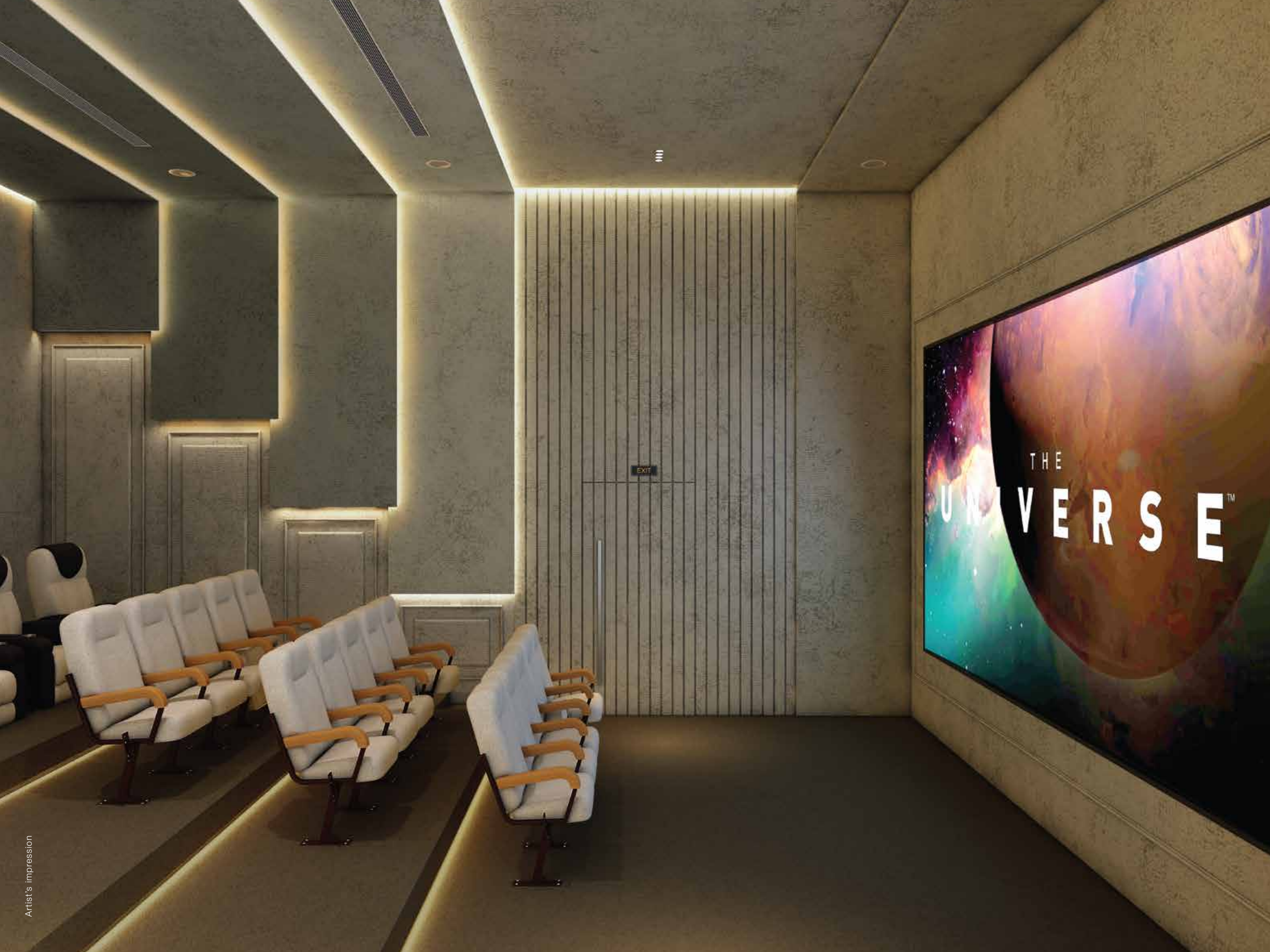
Finished ODU Platform for AC Outdoor units



Lintel height dado in toilets

# *Interior Views*









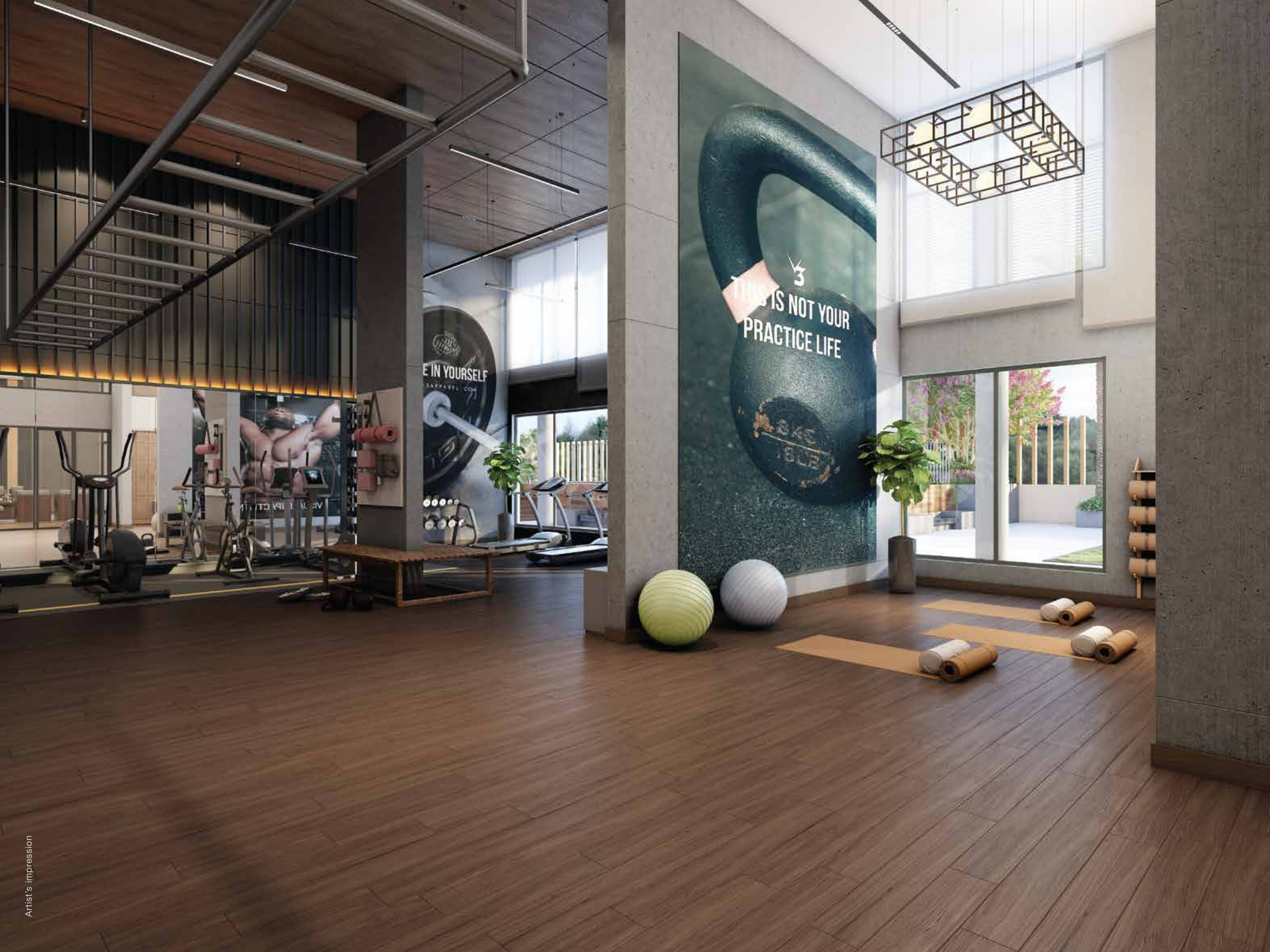


















# ***Exterior Views***







































