



GODREJ SOUTH ESTATE

SOUTH DELHI

A LEGACY OF TRUST.

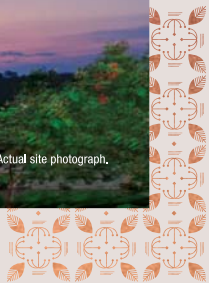
Innovation. Sustainability. Excellence. You'll find that these values are the cornerstone of everything we build at Godrej Properties. And it's these very same values, along with a legacy of trust and commitment to cutting-edge design that gives shape to whatever we put our hands to.


Deeply rooted in principles of good and green, we've built many landmarks across the country over the past 122 years. Some of these landmarks include projects such as Godrej One, The Trees, Godrej Reflections and Godrej Golf Links.

Today, with a proud tradition of many firsts in the real estate industry, we still find ourselves busy at work, laying the foundations for landmarks that are truly one of a kind.



Actual site photograph.



An aerial photograph of a large, circular, multi-tiered structure, possibly a water treatment facility or a large-scale architectural installation. The structure is composed of numerous concentric rings and segments, creating a complex, geometric pattern. The central part of the structure is a large, dark, flower-like shape. Surrounding this central part are several smaller, circular segments, each containing a pool of water. The overall color palette is dark, with shades of brown, black, and teal. The text is overlaid in a bold, serif font, centered horizontally and vertically.

**A LEGACY BUILT ON TRUST
ARRIVES IN SOUTH DELHI.**

A photograph of a man with a beard and short hair, wearing a dark suit jacket over a light-colored shirt, sitting in the driver's seat of a car. He is looking out the window with a serious expression. A hand in a grey suit sleeve is visible on the right, holding the door handle. The car's interior, including the steering wheel and dashboard, is partially visible. The background shows a blurred outdoor setting.

**AN ADDRESS
THAT SERVES
AS YOUR
INTRODUCTION.**

Stock image is for representative purpose only.



Stock image is for representative purpose only.

Imagine an address that could
redefine the skyline of South Delhi.
One with a stature that towers
far above the rest and a copper crown
that graces its head. One that comes
from intricate design and a deep
understanding of what luxury truly is.
An address that takes even the
air you breathe to a whole new level.
An address that serves as your calling card.
Welcome to luxury's truest landmark.



A LANDMARK THAT HAS ALL THE RIGHT CONNECTIONS.

Godrej South Estate is a landmark that will always find itself in good company. This revered address, in fact, finds itself near one of the finest parts of South Delhi, as places like Greater Kailash, New Friends Colony, Defence Colony and Saket are merely kilometres away. It also finds itself in the company of many notable landmarks in the vicinity around. Landmarks such as the Lotus Temple, Tughlaqabad Fort, NFC Club and the Asola Reserve to mention a few.

One of its greatest features, however, remains the easy connectivity it enjoys with both the Delhi-Noida Direct Road and the Outer Ring Road. This ensures that neighbouring cities like Noida and Faridabad are always in close quarters, making Godrej South Estate a true landmark when it comes to connectivity.



Stock image is for representative purpose only.



CONNAUGHT PLACE



INDIA GATE



CHANAKYAPURI

HAUZ KHAS VILLAGE

SAKET

LOTUS TEMPLE



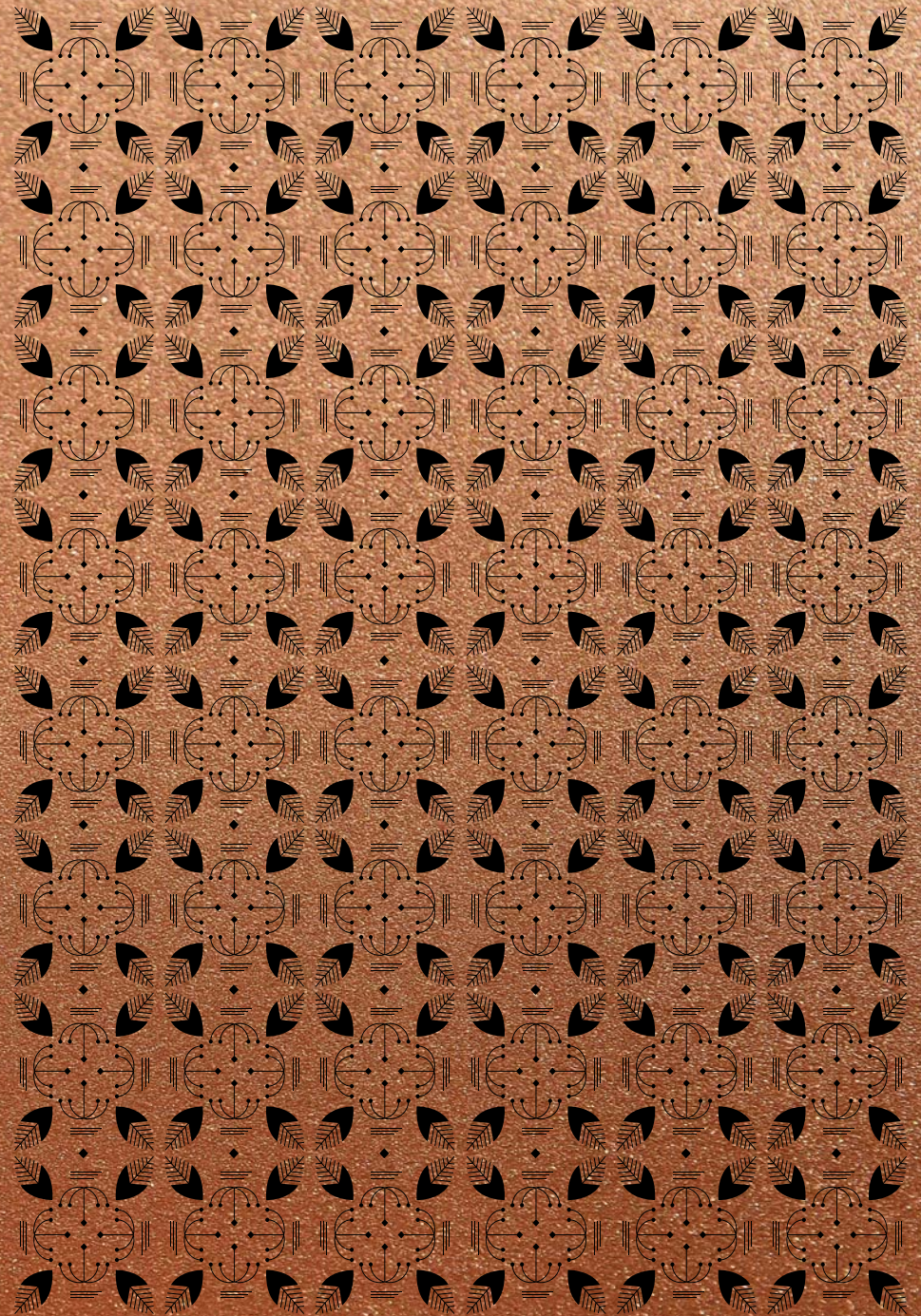
GODREJ SOUTH ESTATE

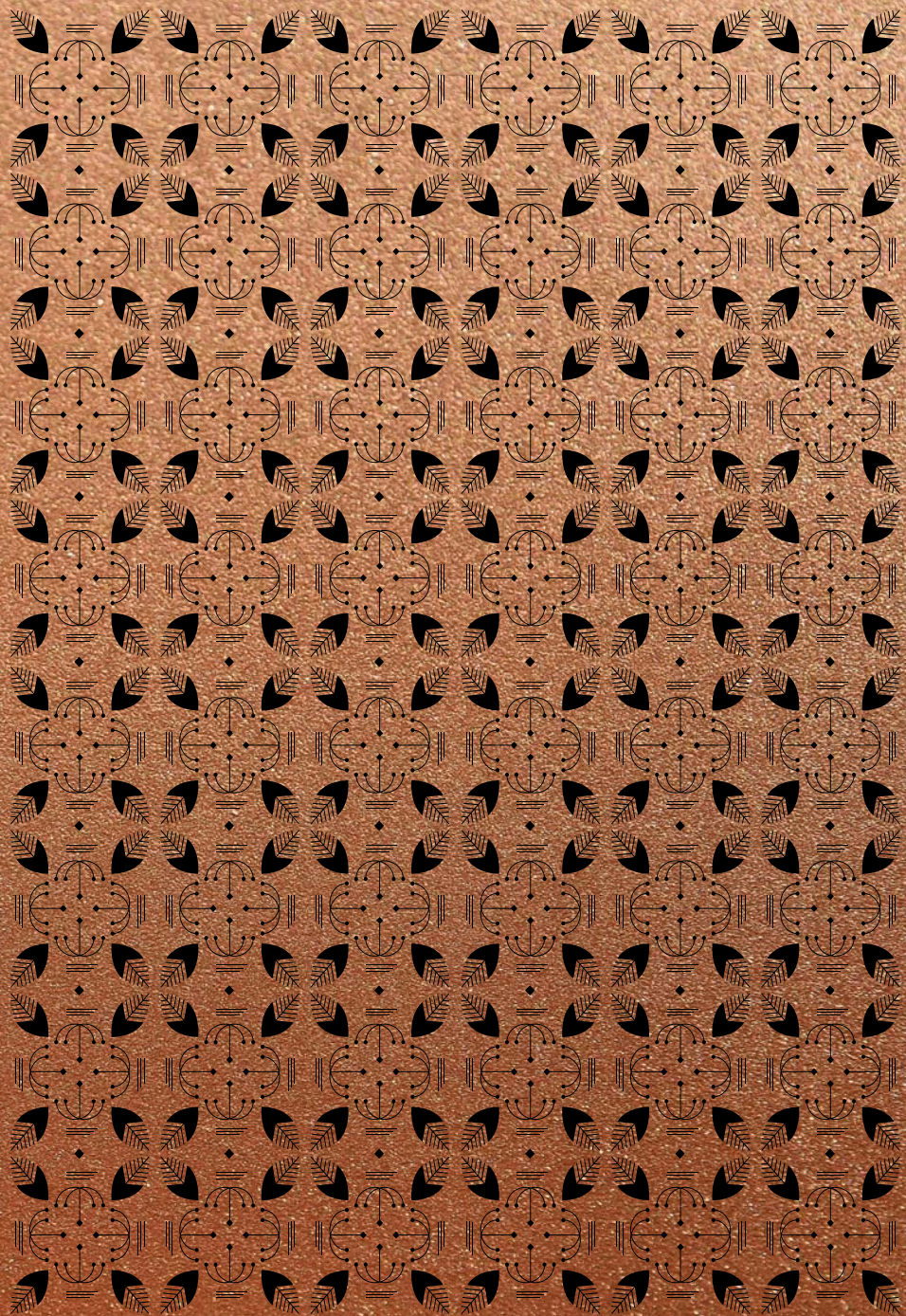


TUGHLAQABAD FORT



INTRODUCING
GODREJ
SOUTH ESTATE.





A LANDMARK
OF LUXURY.



Welcome to the first gated enclave from Godrej Properties in South Delhi.

A landmark high rise that stands as one of the tallest in South Delhi, along with landmark amenities and an unmatched ease of connectivity.

Welcome to one of the truest landmarks of luxury in South Delhi.
Welcome to Godrej South Estate.

LIVE THE LANDMARK



Godrej South Estate is a landmark that is inspired by the many landmarks that have come before it. You see, this is a landmark where every stone, metal and element of design draws inspiration from palaces and monumental structures.

Yes, this is an address that can very aptly be described as the pride of South Delhi.

So, if you take a look at the location, lifestyle and connectivity that comes with a home at Godrej South Estate, you'll realise why it is an address that lets you truly live the landmark.

A HOME TO LANDMARK DESIGN.

Godrej South Estate is not just an address, but a crown jewel that will soon grace the South Delhi skyline. Recognisable from afar, its commanding presence will tower far above the rest. With a gleaming copper crown atop its head, every element that's used to build this landmark has a rich legacy to it. The stone-cladded entrance here for instance, is inspired by the use of Dholpur stones at the Rashtrapati Bhavan. The jaali elevation here too showcases intricate designs that draw inspiration from the ones seen in Mughal architecture.

Marked with grand entrances and picturesque drop-offs, Godrej South Estate, you'll find, is a true testament to landmark living.



Stock image is for representative purpose only.



THE PINNACLE OF LANDMARK LIVING.

Godrej South Estate is the latest landmark to be introduced in the story of South Delhi. And it is one with a stature that's above all else.

From this new landmark, you will be able to take in uninterrupted panoramic views of the city. In fact, this landmark with a crown of copper is sure to redefine South Delhi's skyline for years to come.



A LANDMARK OF PRIVACY, DRAPED IN SHADES OF GREEN.

Your home at Godrej South Estate is about as close as it gets to a modern day paradise. Yes, this is a home that boasts of meticulously manicured lawns and parks that are surrounded by ornate water bodies. Out here, expansive greens beckon you to come together and mingle with other like-minded people. And as this landmark has been thoughtfully planned to drown out the city's humdrum, here, you'll find plenty of cozy, green corners where you can lose yourself in a book, an evening stroll or even hours of conversation, perhaps.



**TAKE A PLUNGE
INTO THE WORLD
OF TRUE LUXURY.**



A CLUBHOUSE THAT'S A CELEBRATION OF INDULGENCE.

Discover a lifestyle that's a true landmark in the world of luxury. This is the kind of luxury you'll experience when you step into the clubhouse and take a dip in the pool. You'll feel it as you slip into the spa, or as you take a stroll across the many retail outlets that let you splurge to your heart's content. You'll see it in the private parties where you'll find yourself raising a toast with the society's elite. You'll also feel it when you indulge in sports without setting foot out of the premises. Yes, this is an address where everything in it, is designed to platter up a life of pure indulgence.



WHERE THE AIR THAT SURROUNDS YOU IS PURER.

At Godrej South Estate, every aspect, be it large or small, is crafted to care for you. And the air around you is no exception. Take a deep breath and you'll instantly notice the change in the air, and just how pure it is. With oxy-rich zones and landscaping that outlines the jogging tracks, your early morning run here is sure to be a truly refreshing experience. Moreover, air purifiers with an advanced Mechanical Filterless Fresh Air (MFFA) system are installed across the entire complex, to give you fresh air all through the day. And that's how this landmark living experience extends to everything, even the air within it.

A TOUCH OF CARE IN EVERY BREATH OF FRESH AIR.

Welcome to a home where every aspect, be it large or small, looks out for your well-being. You see, an advanced Filterless Magnetic Air Purification (FMAP) system circulates clean air in every corner of the home. This ensures that the air here is purer and germ-free with a great CO₂ management process in place. And the best part is, this air purification system requires very little maintenance, all year round.



Stock image is for representative purpose only.





A LANDMARK OF SECURITY.

When it comes to security at Godrej South Estate, we make sure that nothing is left to chance. Here, you will feel a sense of security right from the front gate, all the way up to your home. Armed with a 5-tier security system, you'll find that this landmark doubles up as a secure fortress to keep both you and your loved ones safe.

5-tier security system

Periphery

- Laser beam through periphery
- Perimeter fencing
- Automated boom barrier
- Bollards at entrance and exit

Project

- Smart vehicle management system
- IP based CCTV cameras at the main gate, kids' play area and tower lobby
- Night guard vigilance with biometric monitoring
- Mobile application security

Club

- Lifeguard at swimming pool
- Club access security with face detection

Tower

- Lobby security with face detection
- CCTV in tower lobby for each floor
- Passcode access verification at the tower level and project level entrance

Home

- 4-in-one smart door lock with biometric code, card and key access
- Smart video door phone

A BALCONY THAT LETS THE WORLD KNOW WHERE YOU STAND.

The thoughtfully designed residences at Godrej South Estate come with wide balconies that stretch out to offer you panoramic views of the city. With stories to be shared and made, the picturesque views you get from these balconies serve as an amazing backdrop to any conversation. With a landscaped garden below and the warm sun above, out here, you'll find yourself lost in the moment, whether you choose to spend time with your loved ones or yourself.

www.godrejsoutheastate.com



RERA Registration No. DLRERA2019P0003 . Building Plan vide ID No. 10048555 Dated 30.04.2019. www.rera.delhi.gov.in

Site Address: Plot No.B-319, Okhla Industrial Area, Phase-I, New Delhi

Godrej South Estate ("Project") is being developed by Godrej Vestamark LLP. The sale is subject to terms of application form and Agreement for sale. All specifications of the unit shall be as per the final agreement between the Parties. Recipients are advised to apprise themselves of the necessary and relevant information of the project prior to making any purchase decisions. The images shown are artist's impressions/stock images. The details shown in the image are only indicative in nature and are only for the purpose of illustrating/indicating a possible layout and do not form part of the standard specifications/amenities/services to be provided in the project. *Govt. charges/EDC/IDC/lease rent/applicable taxes extra. T&C Apply. The official website of Godrej Properties Ltd. is www.godrejproperties.com. Please do not rely on the information provided on any other website.