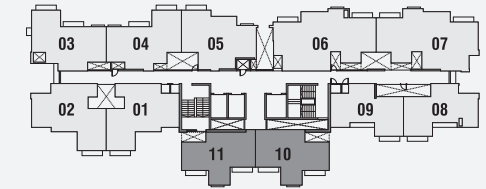
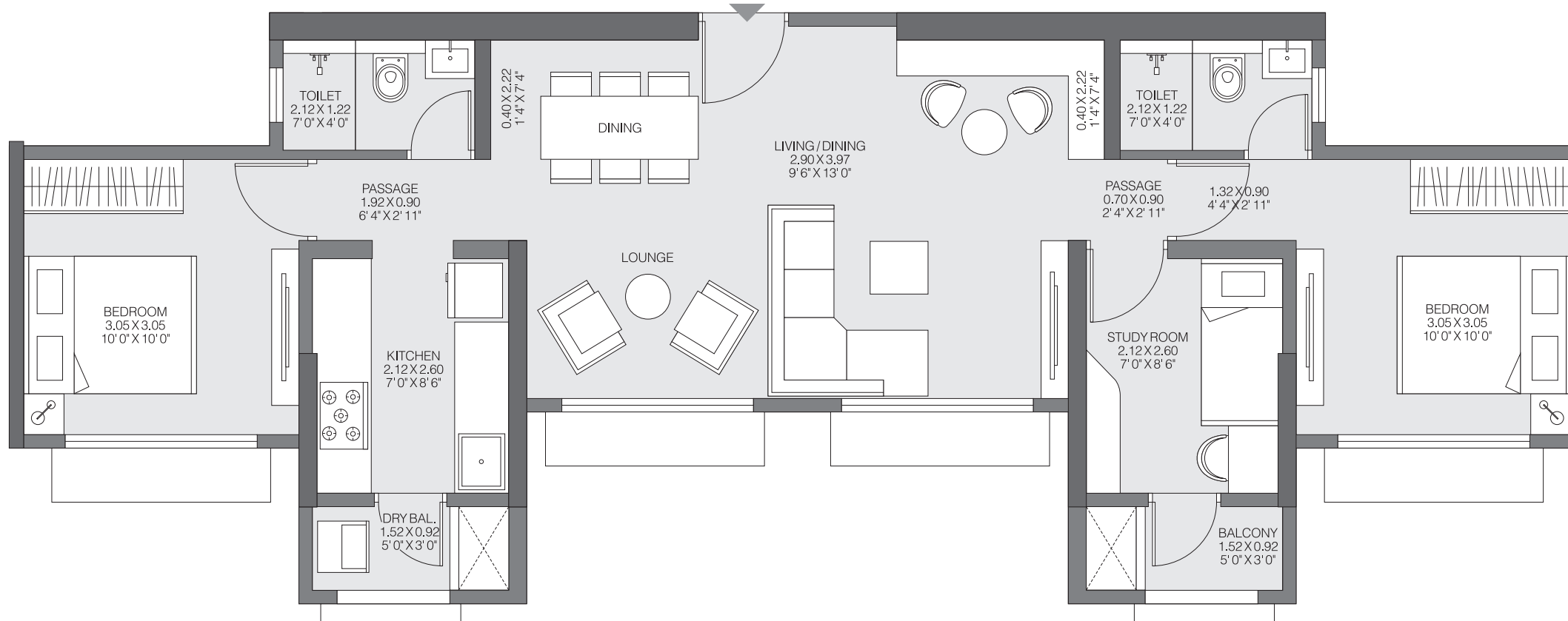


# GODREJ RIVIERA KALYAN

## JODI FLAT

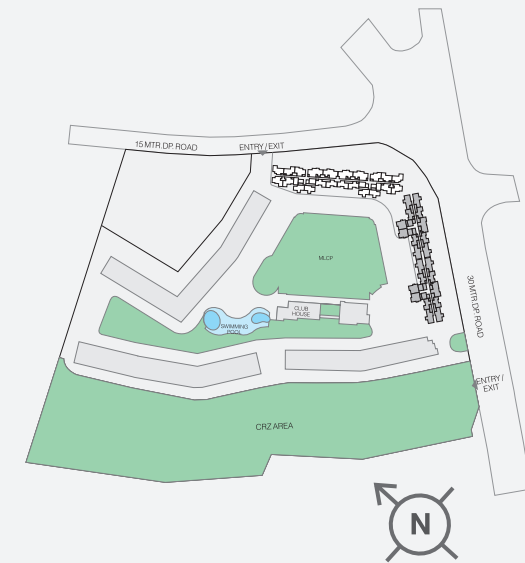
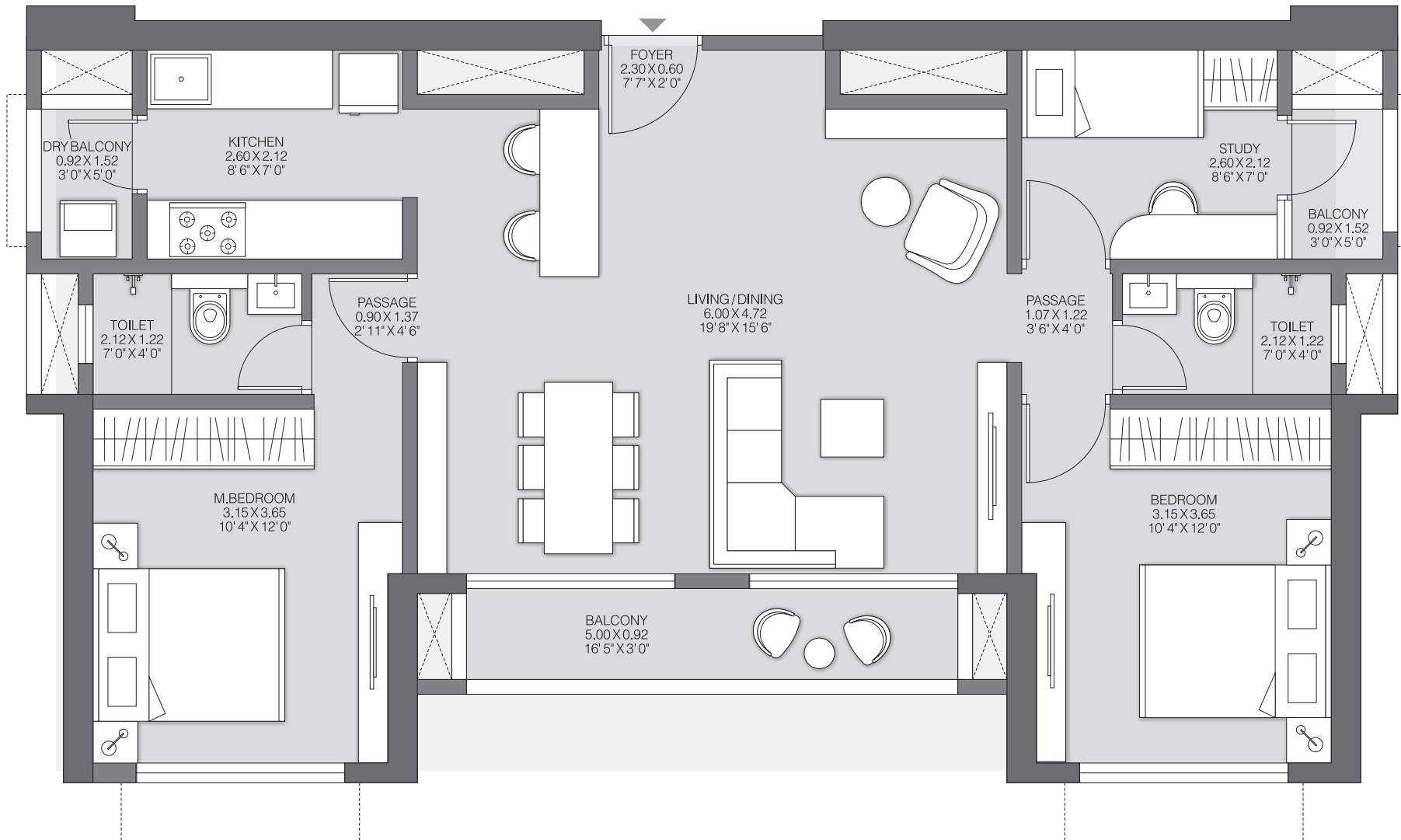
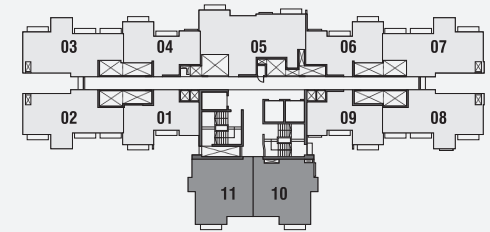


The project is registered as "Godrej Riviera Phase 1" on MahaRERA bearing Registration No. P51700032552 available on MahaRERA website (<https://maharera.mahaonline.gov.in>).

The furniture, decorative items, etc. shown in the plan are only suggested and the same are not intended or obligated to be provided as per specifications and/or service in the flat/ unit and does not form part of the standard specifications. The plan represents unit series 10 & 11 of Tower 1 & 2, 1 Sq m = 10.764 Sq ft.

# GODREJ RIVIERA KALYAN

## JODI FLAT TYPICAL FLOOR



The project is registered as "Godrej Riviera Phase 1" on MahaRERA bearing Registration No. P51700032552 available on MahaRERA website (<https://maharera.mahaonline.gov.in>).

The furniture, decorative items, etc. shown in the plan are only suggested and the same are not intended or obligated to be provided as per specifications and/or service in the flat/ unit and does not form part of the standard specifications. The plan represents unit series 10, 11 of Tower 3 & 4 , 1 Sq m = 10.764 Sq ft.