













GODREJ ELEMENTS

HINJAWADI, PHASE-I

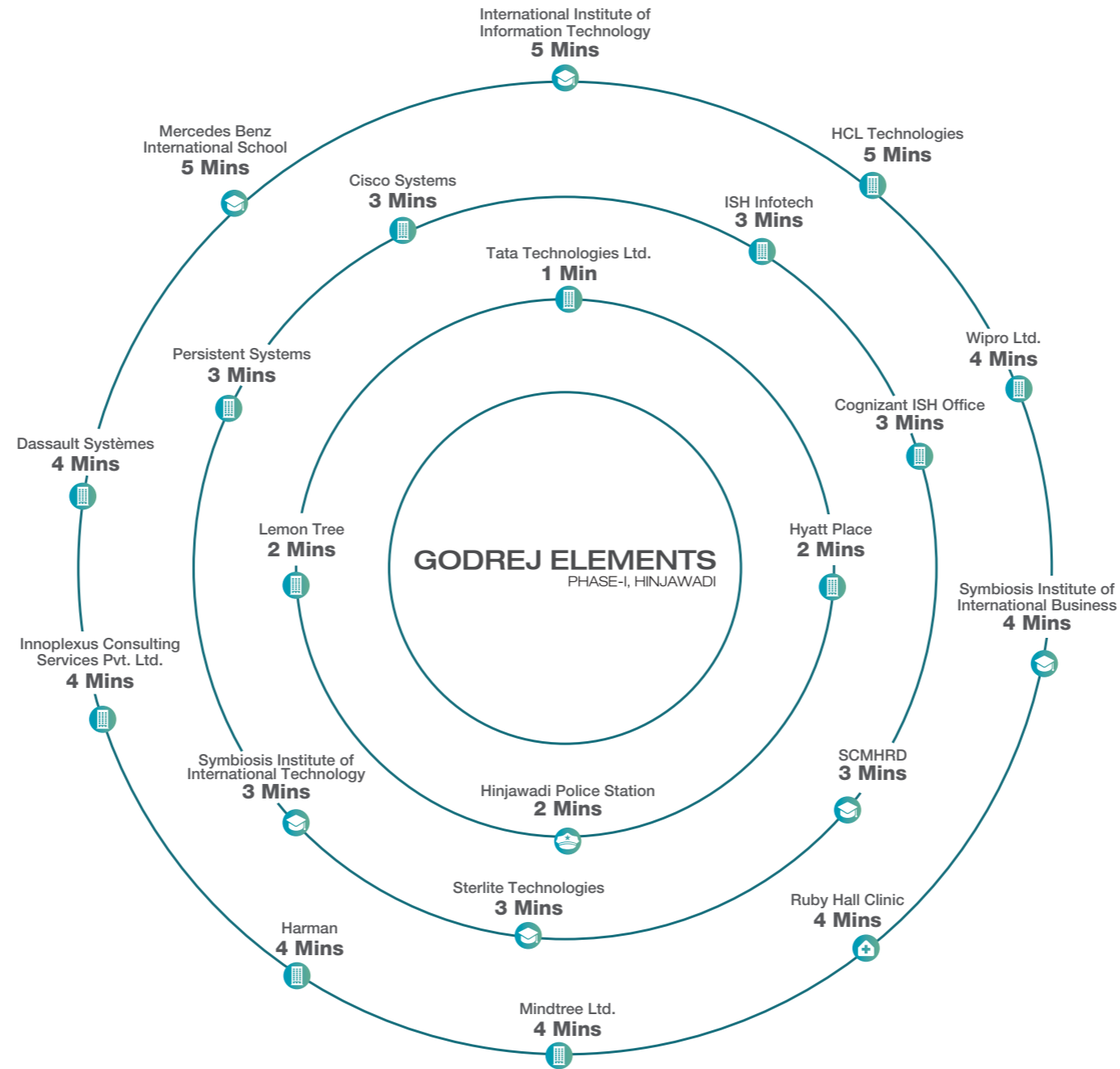


-  Landmarks
-  Hotel/Guest House
-  Roadway
-  Commercial
-  Restaurant
-  Hospital
-  Educational Institute
-  Express Highway
-  Flyover
-  Petrol Pump
-  Mall
-  Upcoming Metro Line



representation basis Google maps. Map not to scale

LOCATION MAP



THE BEST OF INFRASTRUCTURE WITHIN A 5-MINUTE DISTANCE



GODREJ ELEMENTS

MahaRERA Registration No. P52100016626 available at website <http://maharera.mahaonline.gov.in>

ARTIST'S IMPRESSION. NOT AN ACTUAL SITE PHOTOGRAPH.



CLUBHOUSE

MahaRERA Registration No. P52100016626 available at website <http://maharera.mahaonline.gov.in>

ARTIST'S IMPRESSION. NOT AN ACTUAL SITE PHOTOGRAPH.

21 ELEMENTS OF ASSURANCE

which ensures freedom from worries for your loved ones



AUTO VAULT SYSTEM



VEHICLE MANAGEMENT SYSTEM



VISITOR MANAGEMENT SYSTEM



ACCESS CONTROL SYSTEM



IP SERIES VIDEO DOOR PHONE



MASTER MONITORING APP



GEO TAGS FOR KIDS



KIDS-SAFE RAILINGS



LATCHES ON TOILET SEAT COVERS



CHILD-SAFE LOCKS ON KITCHEN CABINETS



SHOCKPROOF SWITCH BOARDS



CHILD FRIENDLY LOCKS ON THE DOOR



MOTION SENSER LIGHTS



PERSONAL MEDICAL ALERT SYSTEM INSIDE HOME



HANDRAILS INSIDE BATHROOMS



COARSE AND ANTI-SKID TILES IN TOILETS AND TERRACE



SHUTTLE SERVICES ARMED
WITH CCTV AND SECURITY PERSONNEL



4-IN 1 BIOMETRIC ACCESS TO HOME ENTRANCE



BIOMETRIC ACCESS
TO CLUBHOUSE

5x5

5 Amenities At Each Level



TOWER ROOF TOP AMENITIES STAR GAZING DECK

MahaRERA Registration No. P52100016626 available at website <http://maharera.mahaonline.gov.in>

STOCK IMAGES FOR REPRESENTATIVE PURPOSE ONLY. NOT AN ACTUAL SITE PHOTOGRAPH.



READING DECK



BARBEQUE DECK



PARTY DECK



MEDITATION DECK

STOCK IMAGES FOR REPRESENTATIVE PURPOSE ONLY. NOT AN ACTUAL SITE PHOTOGRAPH.



CLUB HOUSE AMENITIES COVERED SWIMMING POOL

MahaRERA Registration No. P52100016626 available at website <http://maharera.mahaonline.gov.in>

ARTIST'S IMPRESSION. NOT AN ACTUAL SITE PHOTOGRAPH.



MULTIPURPOSE HALL
WITH PANTRY



SPA WITH
SAUNA



DIGITAL GAMING ZONE

MahaRERA Registration No. P52100016626 available at website <http://maharera.mahaonline.gov.in>



GYMNASIUM

STOCK IMAGES FOR REPRESENTATIVE PURPOSE ONLY. NOT AN ACTUAL SITE PHOTOGRAPH.



OPEN SPACE GROUND AMENITIES

CABANAS NEAR SWIMMING POOL

MahaRERA Registration No. P52100016626 available at website <http://maharera.mahaonline.gov.in>

STOCK IMAGES FOR REPRESENTATIVE PURPOSE ONLY. NOT AN ACTUAL SITE PHOTOGRAPH.



READING COVES



CRICKET
PRACTICE PITCH



KIDS PLAY AREA



PARTY LAWN



PODIUM EDGE AMENITIES

LED LIT - MULTIPURPOSE COURT
(TRAINING TENNIS COURT, BASKETBALL, FUTSAL COURT)

MahaRERA Registration No. P52100016626 available at website <http://maharera.mahaonline.gov.in>

ARTIST'S IMPRESSION. NOT AN ACTUAL SITE PHOTOGRAPH.



OPEN AIR GYM FOR SENIOR CITIZENS



SENIOR CITIZEN SIT OUTS



ACUPRESSURE WALKWAY



TODDLERS PLAY AREA



PODIUM CORNER AMENITIES

LAWN CHESS

MahaRERA Registration No. P52100016626 available at website <http://maharera.mahaonline.gov.in>

STOCK IMAGES FOR REPRESENTATIVE PURPOSE ONLY. NOT AN ACTUAL SITE PHOTOGRAPH.



JOGGING
TRACK



GAMES AREA



BOARD GAMES

MahaRERA Registration No. P52100016626 available at website <http://maharera.mahaonline.gov.in>



YOUNGSTER'S ZONE

STOCK IMAGES FOR REPRESENTATIVE PURPOSE ONLY. NOT AN ACTUAL SITE PHOTOGRAPH.

SPECIFICATIONS



Structure	<ul style="list-style-type: none"> • Earthquake resistant structure
Wall Finish	<ul style="list-style-type: none"> • Internal walls - OBD finish • External walls - smooth finish with texture paint
Doors	<ul style="list-style-type: none"> • Main entrance - Flush door with veneer on both side • Other doors - Flush door with laminates on both side
Windows	<ul style="list-style-type: none"> • Windows - Powder coated windows with mosquito nets
Kitchen	<ul style="list-style-type: none"> • Granite counter top with SS sink • Wall cladding with glazed tiles above counter
Toilet	
Sanitary ware	Kohler/Jaguar or equivalent
CP fittings	Kohler/Jaguar or equivalent
Wall cladding (other toilets)	Ceramic tiles

Electricals	
Modular switches	Legrand/Anchor Roma or Equivalent
Flooring	
Living/ dining	Vitrified flooring
Kitchen	Vitrified flooring
Master bedroom	Vitrified flooring
Other bedrooms	Vitrified flooring
Terraces	Anti-skid ceramic tiles
Utility area	Anti-skid ceramic tiles
Master Toilet	Anti-skid ceramic tiles
Other toilet	Anti-skid ceramic tiles
Special features	<ul style="list-style-type: none"> • Home automation • Modular kitchen • Piped gas connection • RO water purifier • Solar water heating system (in M. toilet) • Inverter

PRODUCT CONFIGURATION

Typology	Total Carpet Area (in Sqmt)	Total Exclusive Area (in Sqmt)	Total Flat Area (in Sqmt)	Total Flat Area (in Sqft)	Ticket Size Range (incl. of GST) (in cr.)
2 BHK Type 2	52.41 - 53.92	20.24 - 24.47	74.14 - 77.02	798 - 829	0.72 - 0.80
2 BHK Type 3	61.28 - 64.56	20.99 - 25.98	85.56 - 87.33	921 - 940	0.78 - 0.87
3 BHK Type 1	80.68 - 82.34	26.09 - 27.03	107.86 - 108.42	1161 - 1167	1.13 - 1.20
3 BHK Type 2	103.68 - 103.80	33.97 - 34.43	137.68 - 137.24	1482 - 1488	1.41 - 1.51



UNIT PLANS

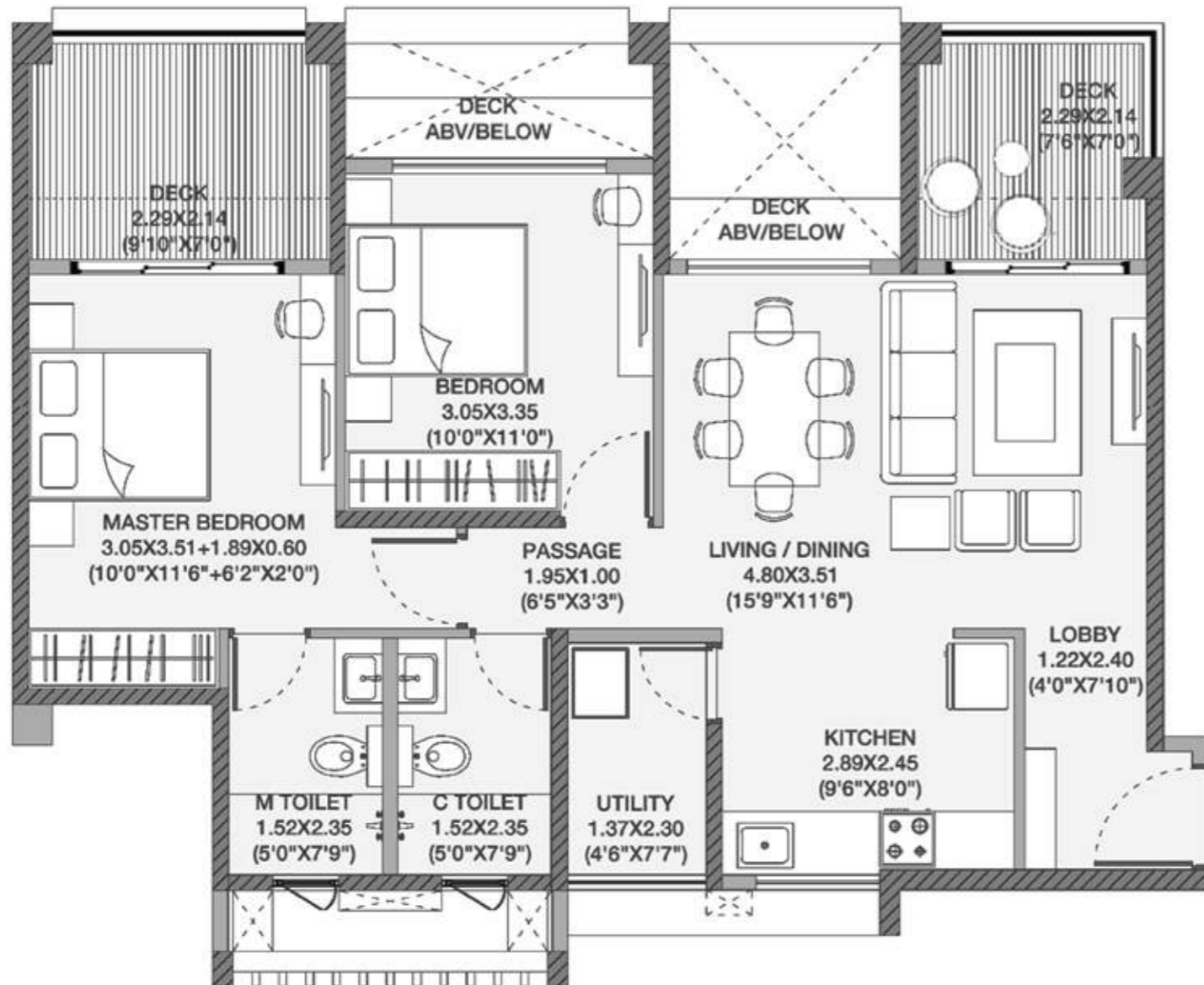
MahaRERA Registration No. P52100016626 available at website <http://maharera.mahaonline.gov.in>

#LIVE FREE

ARTIST'S IMPRESSION. NOT AN ACTUAL SITE PHOTOGRAPH.

GODREJ ELEMENTS

HINJAWADI, PHASE-I



2BHK TYPE-2

TOTAL AREA: 76.75 Sq.mt.(826 Sq.ft.)

1 Sq.Mt = 10.764 Sq. Ft.
1 Mt = 3.281 Ft.

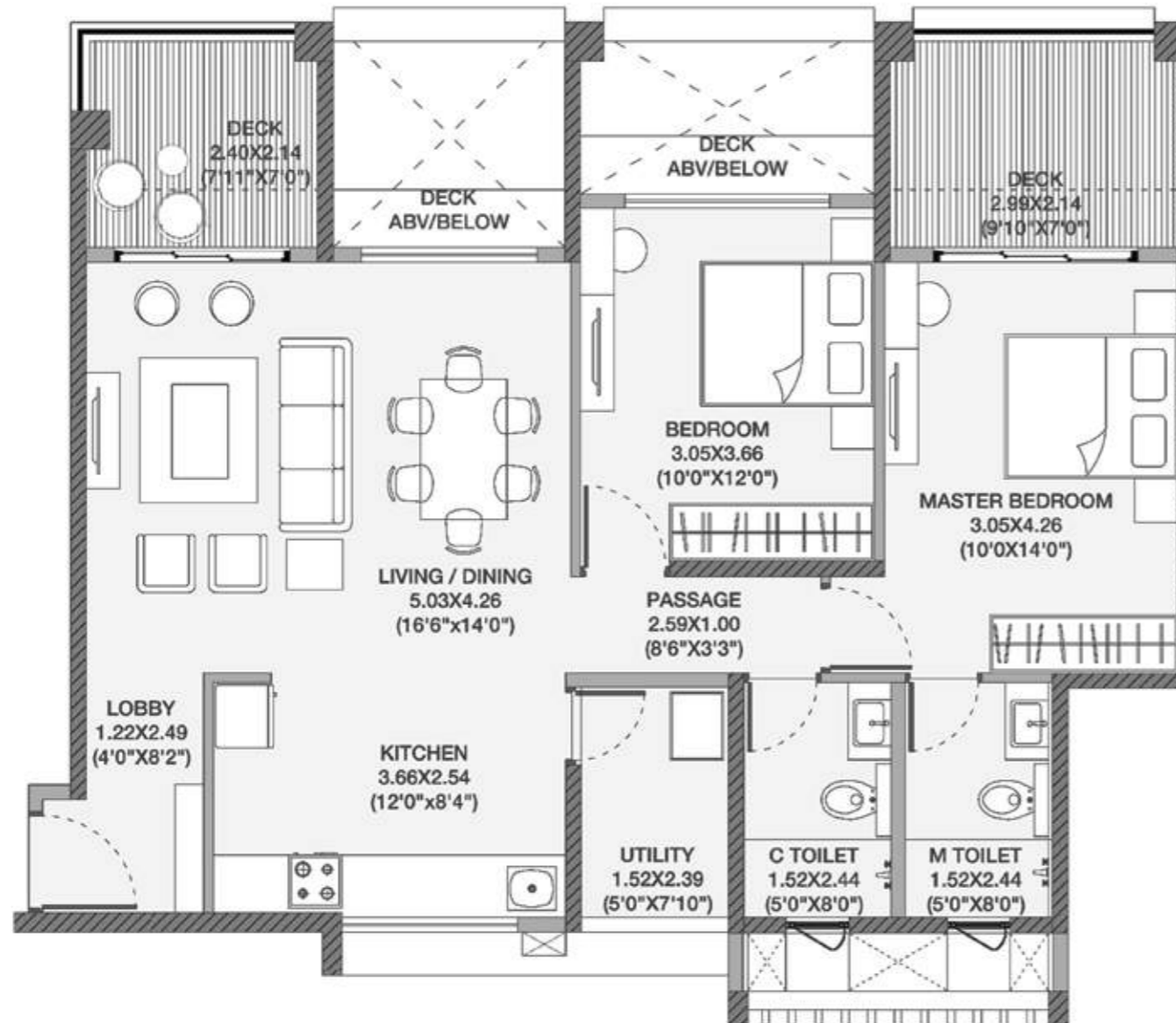
Layout Features:

1. Entrance foyer ensures privacy to the Living/Dining space
2. All bedrooms have an access through passage ensuring privacy of bedrooms
3. 3-side open apartment ensuring optimum cross-ventilation (Except refuge and 1st floor)
4. Diffused sunlight throughout the year enabling less electricity usage
5. Minimum two double height terraces attached with Living/Dining and one of the bedrooms

Disclaimer:- The furniture, accessories, paintings, items, electronic goods, additional fittings/fixtures, decorative items, false ceiling including finishing materials, specifications, shades, sizes and colour of the tiles etc. shown in the image are only indicative in nature and are only for the purpose of illustrating/ indicating a possible layout and do not form part of the standard specifications/amenities/services to be provided in the flat.

GODREJ ELEMENTS

HINJAWADI, PHASE-I



2BHK TYPE-3

TOTAL AREA: 87.25 Sq.mt.(939 Sq.ft.)

1 Sq.Mt = 10.764 Sq. Ft.
1 Mt = 3.281 Ft.

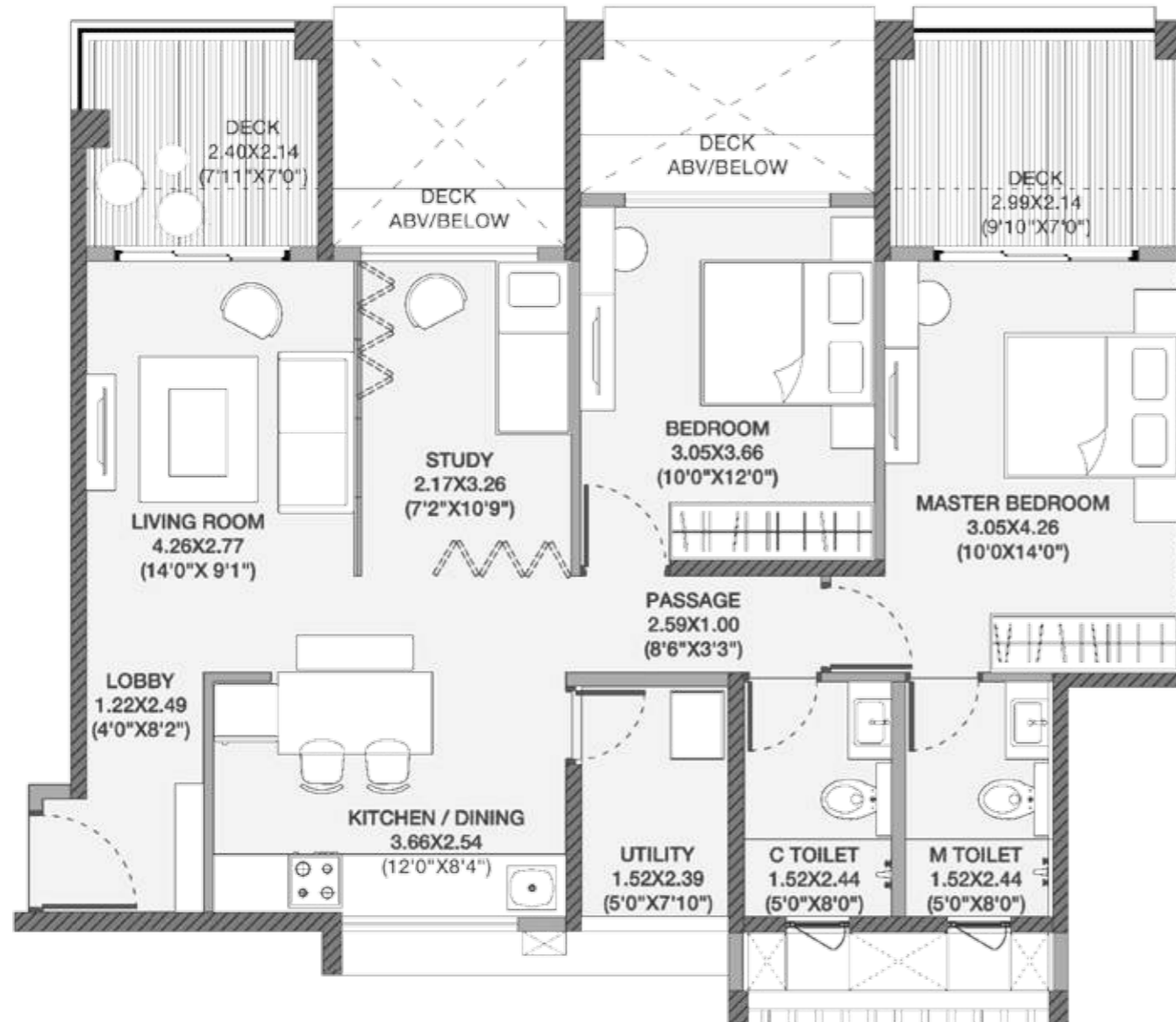
Layout Features:

1. Entrance foyer ensures privacy to the Living/Dining space
2. All bedrooms have an access through passage ensuring privacy of bedrooms
3. Minimum two double height terraces attached with Living/Dining and one of the bedrooms
4. Very spacious Living/Dining space of size >21.4 sqm (If required a separate room can be carved out from this space and used as 2.5BHK)
5. Humongous kitchen of 9.2 sqm

Disclaimer:- The furniture, accessories, paintings, items, electronic goods, additional fittings/fixtures, decorative items, false ceiling including finishing materials, specifications, shades, sizes and colour of the tiles etc. shown in the image are only indicative in nature and are only for the purpose of illustrating/ indicating a possible layout and do not form part of the standard specifications/amenities/services to be provided in the flat.

GODREJ ELEMENTS

HINJAWADI, PHASE-I



2BHK TYPE-3 (WITH STUDY)

TOTAL AREA: 87.25 Sq.mt.(939 Sq.ft.)

1 Sq.Mt = 10.764 Sq. Ft.

1 Mt = 3.281 Ft.

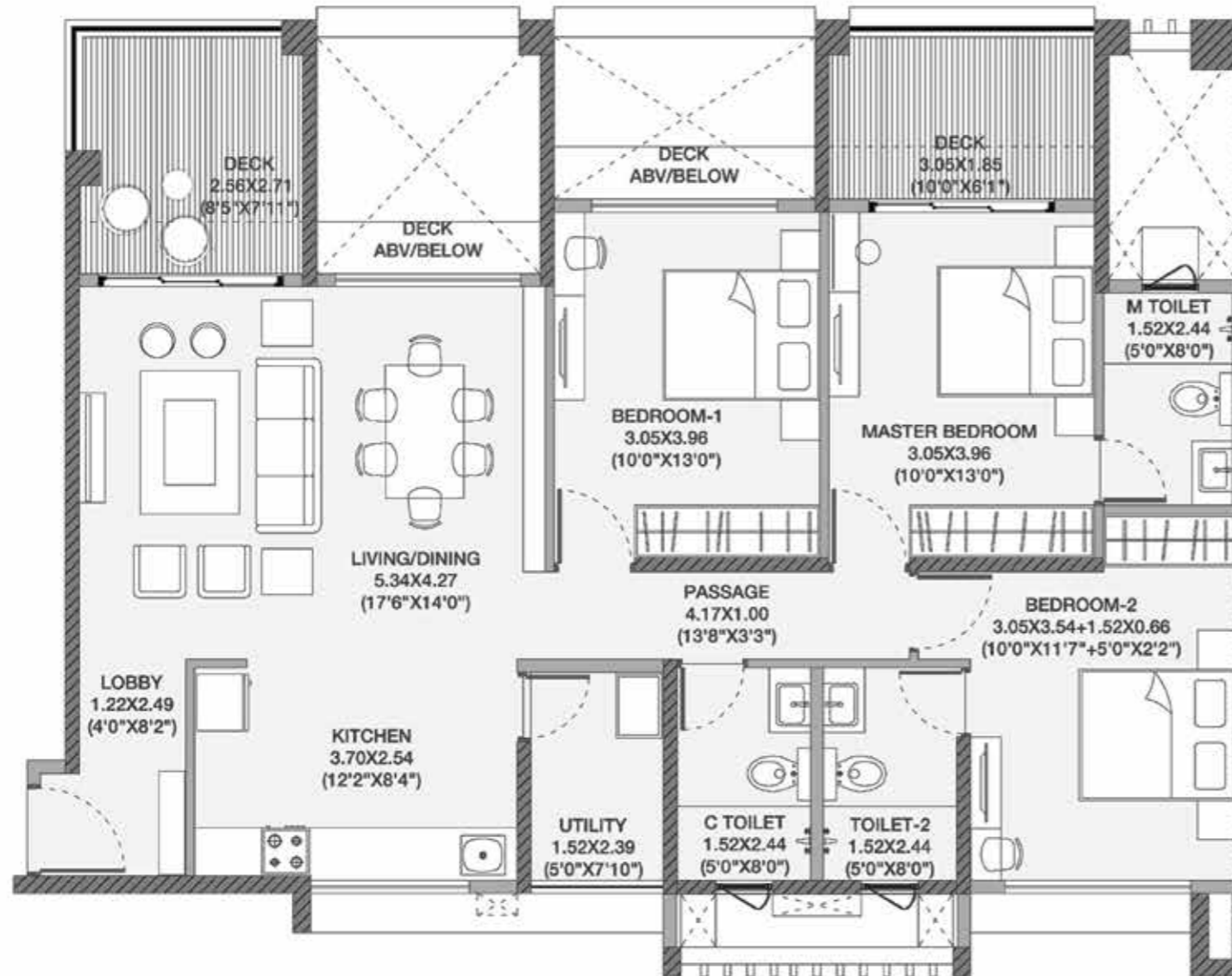
Layout Features:

1. Entrance foyer ensures privacy to the Living/Dining space
2. All bedrooms have an access through passage ensuring privacy of bedrooms
3. Minimum two double height terraces attached with Living/Dining and one of the bedrooms
4. Very spacious Living/Dining space of size >21.4 sqm (If required a separate room can be carved out from this space and used as 2.5BHK)
5. Humongous kitchen of 9.2 sqm

Disclaimer:- The furniture, accessories, paintings, items, electronic goods, additional fittings/fixtures, decorative items, false ceiling including finishing materials, specifications, shades, sizes and colour of the tiles etc. shown in the image are only indicative in nature and are only for the purpose of illustrating/ indicating a possible layout and do not form part of the standard specifications/amenities/services to be provided in the flat.

GODREJ ELEMENTS

HINJAWADI, PHASE-I



3BHK TYPE-1

TOTAL AREA: 108.43 Sq.mt.(1167 Sq.ft.)

1 Sq.Mt = 10.764 Sq. Ft.

1 Mt = 3.281 Ft.

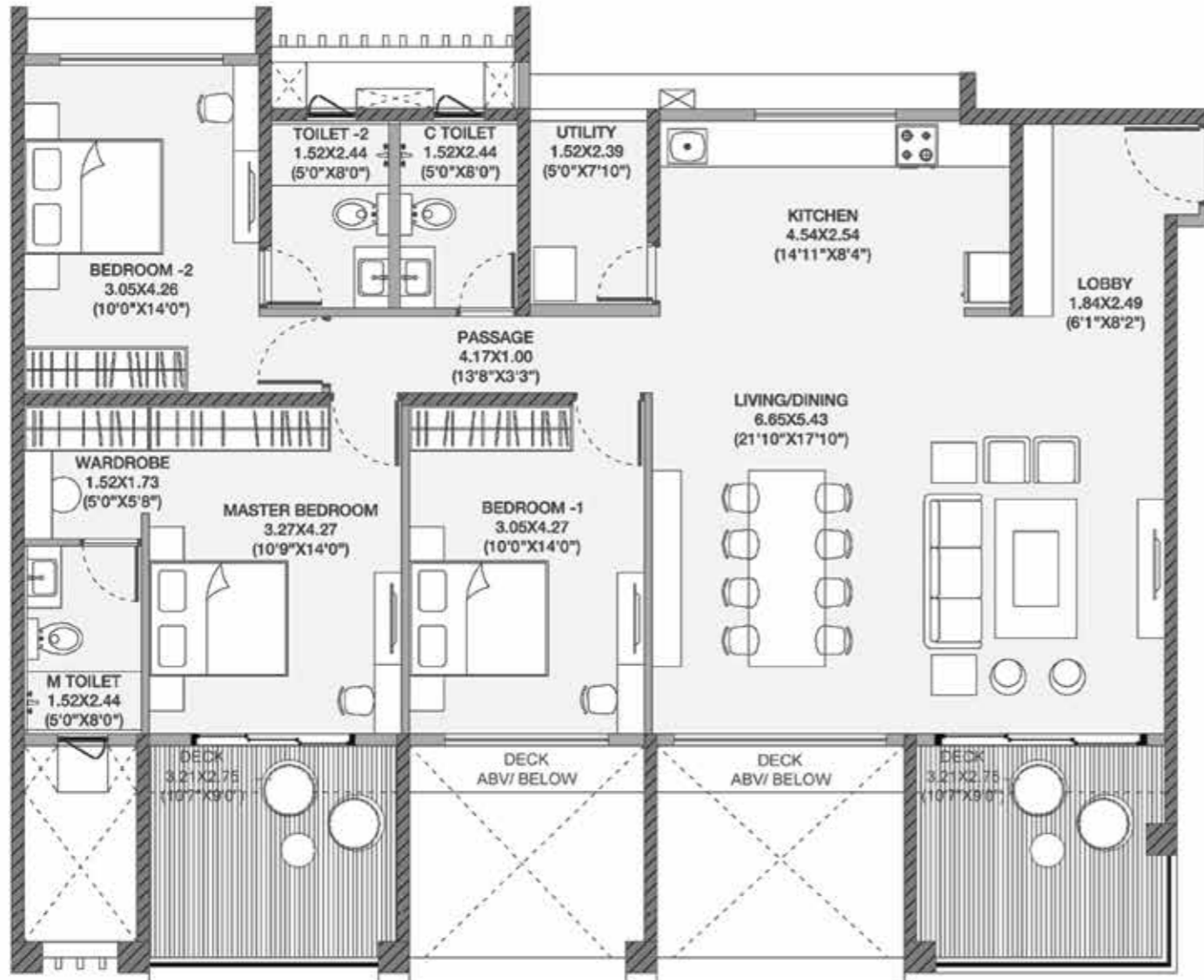
Layout Features:

1. Entrance foyer ensures privacy to the Living/Dining space
2. All bedrooms have an access through passage ensuring privacy of bedrooms
3. Minimum two double height terraces attached with Living/Dining and one of the bedrooms
4. Humongous kitchen of size >9.2 sqm

Disclaimer:- The furniture, accessories, paintings, items, electronic goods, additional fittings/fixtures, decorative items, false ceiling including finishing materials, specifications, shades, sizes and colour of the tiles etc. shown in the image are only indicative in nature and are only for the purpose of illustrating/ indicating a possible layout and do not form part of the standard specifications/amenities/services to be provided in the flat.

GODREJ ELEMENTS

HINJAWADI, PHASE-I



3BHK TYPE-2

TOTAL AREA: 138.20 Sq.mt.(1488 Sq.ft.)

1 Sq.Mt = 10.764 Sq. Ft.
1 Mt = 3.281 Ft.

Layout Features:

1. Entrance foyer ensures privacy to the Living/Dining space
2. All bedrooms have an access through passage ensuring privacy of bedrooms
3. Minimum two double height terraces attached with Living/Dining and one of the bedrooms
4. Walk-in wardrobe attached with Master Bedroom
5. Humongous Living/Dining space > 36 sqm

Disclaimer:- The furniture, accessories, paintings, items, electronic goods, additional fittings/fixtures, decorative items, false ceiling including finishing materials, specifications, shades, sizes and colour of the tiles etc. shown in the image are only indicative in nature and are only for the purpose of illustrating/ indicating a possible layout and do not form part of the standard specifications/amenities/services to be provided in the flat.

PAYMENT PLAN

Milestone	Current CLP
Booking Amount	5 Lakh or 5% which ever is lower
45 Days From Booking	5.0%
Allotment/Agreement/MOEF	8.0%
On Completion of Excavation	8.0%
On Completion of 1st slab	8.0%
On Completion of 6th Slab	8.0%
On Completion of 10th Slab	8.0%
On Completion of 13th Slab	8.0%
On Completion of 16th Slab	6.0%
On Completion of Terrace Slab	6.0%
On Completion of Walls and Internal Plaster	3.0%
Completion of Flooring, doors & windows	2.0%
Finishing of staircases, lift wells, lobbies	3.0%
Completion of Sanitary fitting	2.0%
Terraces with water proofing	3.0%
External plumbing, external plaster, elevations	2.0%
On Completion of Lifts	5.0%
2 water pumps, electrical fittings, electro-mechanical & environment requirements, entrance lobby/s plinth protection	2.5%
Paving of areas appertain & other conditions	2.5%
On notice of possession	5%
Total	100%

SITE ADDRESS

A Godrej 24, Rajiv Gandhi Infotech Park, Next to Wipro,
Hinjewadi, Phase 1, Pune 411057

T 1800 258 2588

W www.godrejproperties.com/godrejhinjawadi

GODREJ PROPERTIES LTD. REGIONAL OFFICE

A Godrej Properties Limited, Godrej Eternia C,
10th floor, Office A, 3 Old Mumbai Pune Highway,
Wakdevadi, Shivajinagar, Pune 411 005

GODREJ PROPERTIES LTD. REGISTERED OFFICE

A Godrej Properties Ltd. Godrej One,
5th Floor, Pirojshanagar, Vikroli (E),
Mumbai - 400 079. India

T +91 22 6169 8500

W www.godrejproperties.com

GODREJ PROPERTIES LTD. SINGAPORE OFFICE

A 2026 Regus Business Centre, One Fullerton, One Fullerton Road, Singapore

T +91 22 6149 0810

MahaRERA Registration No. P52100016626 available at website <http://maharera.mahaonline.gov.in>

All images shown are artist impressions and stock images. This printed material is in respect of an ongoing project and does not constitute an offer, an invitation to offer and /or commitment of any nature between the recipient and us. The designs, dimensions, cost, facilities, plans, furniture, accessories, paintings, items, electronic goods, additional fittings/fixtures, decorative items, false ceiling including finishing materials, specifications, shades, sizes, colour of the finishing materials and other details shown in the image are only indicative in nature and are only for the purpose of illustrating/indicating a possible layout and do not form part of the standard specifications/amenities/services to be provided. Proposed amenities including the aspect of 24 hours functionality are subject to various approval/s, sanction/s, consent/s from relevant authorities and are subject to change. In the event such proposed amenities are not available due to non-feasibility or approvals then we do not assume any liability or responsibility for the same and customers shall have no claims against us whatsoever. All specifications of the flat shall be as per the final agreement between the parties. Recipients are advised to use their discretion in relying on the information/amenities described/shown therein.